



Westerly Griffon MK 1

£6,995 • Brightlingsea United Kingdom (UK) • Used • 1981

Presented by

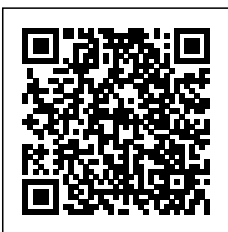
Peter Marchant
Phone: 44(0)1206302003

Morgan Marine
The Boatyard, Shipyard
Estate
CO7 0AR Colchester
United Kingdom (UK)

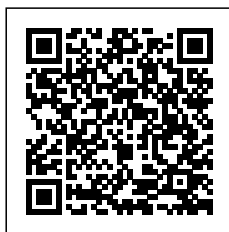


Details

Make:	Westerly
Model:	Griffon MK 1
Year:	1981
Condition:	Used
Engine:	, 300 hp
Engine type:	
Fuel type:	Diesel
Length:	7.92 m (25.98 ft)
Beam:	2.82 m (9.25 ft)
Cabins:	0
Berths:	0



Morgan Marine



7zea.com

Description

EN

1981 Westerly Griffon MK 1 bilge keel just in at Morgan Marine. A comfortable and forgiving cruising yacht with a pedigree of safe sail boating. With Volvo Penta MD7A 13HP inboard diesel engine, full galley, toilet compartment, cockpit tent and navigation electronics. Well maintained and well equipped. Angelica has a good paper history of careful owner maintenance. Currently ashore at Brightlingsea - ready to launch for the 2025 season!

Cabin: Steps down to saloon area. 6 berths / 2 cabins with 6ft headroom in main saloon. Forward V shaped berth with infill cushion, sleeve, hatch to deck and hanging storage. Interior lights. Port side stern single berth. Saloon with port and starboard bench style seating with folding table. Toilet compartment with toilet and mirror. Fully galley with Voyager gas stove and cooker, sink, cupboard storage and galley utensils. 2x gas bottles. Clock and Barometer set. Self made 2x wooden door with glass perspex in galley.

Cockpit: Deep, safe cockpit with non-slip flooring. Cockpit removable cushioned bench style seating with generous storage underneath. Tiller steering.

Electronics: Garmin GPSMap 550 chart plotter. Autohelm ST1000 Auto pilot. Raymarine ST40 wind, speed and depth instruments. Ship to Shore VHF radio. Garmin 120 XL GPS. Solar panel on bow. Plastimo compass. Cabin and interior lights. Navigation lights. Radio / CD player. Bilge pump.

Machinery: Volvo Penta MD7A 13 HP shaft drive inboard diesel with twin bladed propeller and rope cutter - Last engine service 2023.

General information

Make:	Westerly
Model:	Griffon MK 1
Year:	1981
Condition:	Used

Engine

Engine:	, 300 hp
Engine type:	
Fuel type:	Diesel

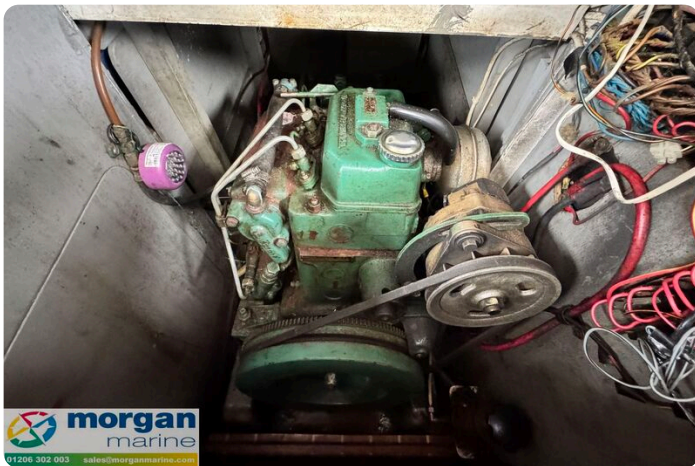
Measurements

Length:	7.92 m (25.98 ft)
Beam:	2.82 m (9.25 ft)
Deep:	0.99 m (3.25 ft)
Weight:	0 ()

Accommodation

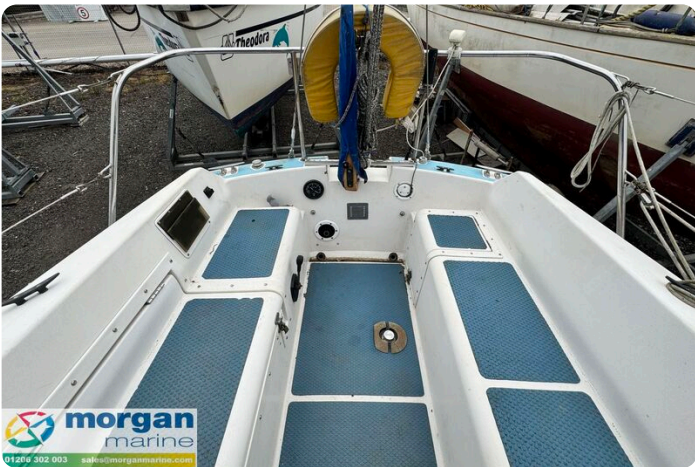
Cabins:	0
Berths:	0

Images

















Morgan Marine

The Boatyard, Shipyard Estate
CO7 0AR Colchester
United Kingdom (UK)

Phone: 44(0)1206302003

<https://morganmarine.com>

