



Sunseeker 88 Yacht

£2,095,000 • Corfu Grèce • Usagé • 2011

Présenté par

Justin Garwell
Phone: +44 (0) 1305 766504

JD YACHTS LIMITED
80 THE ESPLANADE
DT4 7AA WEYMOUTH
Royaume-Uni



Détails

Fabricant:	Sunseeker
Modèle:	88 Yacht
An:	2011
Condition:	Usagé
Moteur:	CATERPILLAR C32 ACERT, 1902 hp
Type de moteur:	
Type de carburant:	Diesel
Longueur:	26.87 m (88.16 ft)
Largeur:	6.22 m (20.41 ft)
Cabines:	0
Couchettes:	0



JD YACHTS
LIMITED



7zea.com

La description

ENG
2011. 2 x 1902 HP CATERPILLAR C32 ACERT
10 berths in 4 cabins plus crew
Lying: Corfu Greece

ENG
Extras

3 X 24-Inch Garmin GPSMAP Touchscreen Chartplotters to Lower Helm
2 X 9-Inch Garmin GPSMAP Touchscreen Displays to Lower Helm
2 X 12-Inch Garmin GPSMAP Touchscreen Chartplotters to Upper Helm
2 X 9-Inch Garmin GPSMAP Touchscreen Displays to Lower Helm
Garmin Dash Mounted Remote Controls for both Helm Stations
Garmin Panoptix 3D Sonar
Open Array Radar Scanner
Garmin Autopilot Head Units to both Helm Stations
Garmin MFD to both Helm Stations
Garmin VHF to both Helm Stations
TRAC Fin Stabilisers
TRAC Hydraulic Bow & Stern Thrusters
Opening Flybridge Hardtop
Underwater lights - Aqualuma Series 6 white LED
Watermaker
Ice Maker to Cockpit Wetbar
Ice Maker to Flybridge Wetbar
Wine Fridge to Saloon
Washing Machine to Crew Quarters
Dishwasher to Galley
2 X Onan Generators

Standard Specification

Principal Features

Air conditioning
Hydraulic lifting platform
Electric winch and capstan at bow with foredeck controls
Manual side opening helm and galley access doors
Hot and cold swimming shower at stern
Power-assisted steering
Flybridge wetbar with sink, ice maker, fridge and griddle
Flatscreen televisions and DVD/CD player in all guest cabins and crew mess
Surround-sound system DVD/CD/radio in saloon and master stateroom
iPod docking station in main saloon
Aft cockpit bar unit
Electric refrigerator/freezer with ice maker
Ceramic hob, microwave/oven and dishwasher
Electronic depth and speed displays
Radar/chart plotter with GPS
Autopilot
VHF radio (dual station)
Hot and cold water system
Fresh water pump
Toilet system with holding tank
Automatic fire extinguishing system for engine room
Automatic bilge pumps
Slow speed generators with silent exhausts
Fire detection system
AC shorepower/battery charger
Bow thruster
Stern thruster
Trim tabs
Remote controlled spotlight at bow

Deckwash with outlets forward, aft and flybridge
Fresh water marina connection
Teak bathing platform and steps
Teak side decks
Teak cockpit floor
Screen demisters
Stern winches

Construction

Hand-laid GRP
Gel coat including stripes
Vinylester skin coat with powderbound mat
Stitched multi-axial reinforced single skin bottom
Balsa cored hull topsides
PVC foam cored deck and superstructure
Hull stiffened with longitudinal stringers supported by transverse bulkheads and floors

Flybridge

Self draining cockpit
Acrylic deflecting spray screen
Seating areas
Storage lockers under seating
Teak dining tables (natural finish) with GRP bases
Upholstered sunbathing area forward
Stainless steel aft safety rails
Glass holders
Wetbar unit
Sink in wetbar unit
Ice maker in wetbar unit
Fridge in wetbar unit
Ceramic electric griddle in wetbar unit
Deckwash outlet
Low-level flybridge lighting 24v
Radar arch structure
Radar chair with navigation light assembly
Overhead lighting on underside of radar arch 24v
Two pairs marine speakers (connected to dedicated CD/radio in saloon & controlled by remote keypad at flybridge helm)

Flybridge Helm

Two helm seats
Hydraulic steering
Duplicate engine controls
Analogue engine instrumentation
Autopilot repeater
Radar/chart plotter with GPS repeater
Depth and speed multi display
VHF second station
Remote spotlight control
Magnetic compass
Steering indicator
Trim tab control
Horn control
Radio/CD remote keypad
Waterproof plug and socket 12v

Deck

Fittings all in 316 stainless steel and chromed bronze
Pair stainless steel bow cleats and fairleads
Stainless steel spring cleats with chafing bars
Pair stern cleats and fairleads
Stainless steel pulpits and cockpit rails
Stainless steel fendering with rubber insert
Stainless steel bow roller with anchor stop and devil's claw
Single electric windlass (Lewmar V8) 24v, starboard side, foredeck control only
Single electric capstan (Lewmar C4) 24v, port side, foredeck

control only
 Anchor 80kg claw-type (galvanised)
 Anchor chain 100 metres/328 feet (12mm diameter, galvanised)
 Stainless steel bow plate
 Deckwash with outlets forward and aft
 Chain locker
 Curved direct glazed safety glass windscreen
 Pantograph windscreen wipers and washers
 Fresh-water filler
 Fuel fillers port and starboard
 IMCO navigation lights
 Remote controlled spotlight at bow
 Low-level courtesy lights on side decks 24v
 Skylight from VIP stateroom
 Bow seat
 Bow sunbathing pad
 Bow teak table top (natural finish)
 Glass holders

Aft Cockpit

Teak laid cockpit floor
 Self-draining
 Stairs to flybridge with teak treads
 Aft fixed bench seating
 Teak table (natural finish) with folding leaves on GRP base
 Stern safety gates
 Engine room access hatch
 2 x stern capstan winches (Lewmar C4)
 24v and fairleads
 Overhead cockpit lights 24v
 Low-level courtesy lights 24v
 Pair marine speakers connected to saloon
 AV system with Bose PMCI remote
 Wetbar unit
 Coolbox in wetbar unit
 Rubbish bin in wetbar unit

Bathing Platform

Teak-laid hydraulic lifting bathing platform (maximum lifting capacity 650kgs/1433lbs, maximum tender weight 550kgs/1212lbs)
 Stairs to aft cockpit with teak treads
 Foldout stainless steel swimming ladder
 Hot and cold hand-held swimming shower
 Fresh-water marina connection
 Television and telephone marina connection
 Access to crew quarters
 Dockside AC connection 1 x 100 amp
 Glendinning Cablemaster
 Euro spec only: 5m hydraulic telescopic passerelle

Saloon and Dining

Stainless steel framed sliding patio door to aft cockpit
 Patio door curtains with tie back
 Sofa seating
 Armchair
 Coffee table
 Scatter cushions
 LCD flatscreen television (42") on rise and fall
 DVD/CD/radio surround sound system with five speakers and sub woofer (Bose 28)
 iPod docking station connected to surround sound system
 Control head for flybridge CD/radio
 Air conditioning
 Side windows with blinds
 Drinks cabinet with glassware stowage for eight (8 x Champagne, 8 x whisky, 1 x decanter)
 Halogen overhead lighting 24v
 Double AC sockets
 Sensor connected to fire detection system
 Telephone point (aft starboard side)
 2 x table lamps

Dining table
 8 x free standing dining chairs
 Storage cupboards
 Fitted carpet
 Access forward to main helm position
 Door leading to galley
 Stairs leading to master stateroom and two guest cabins

Galley

American style fridge/freezer with icemaker
 4-ring ceramic hob AC
 Hob extractor AC
 Slimline dishwasher AC
 Stainless steel sink
 Hot and cold water
 Side window with blind
 Storage consisting of cupboards, drawers and top-box lockers
 Halogen overhead lighting 24v
 Lighting under top box lockers 24v
 Double AC sockets
 Sensor connected to fire detection system
 Air conditioning
 Door to saloon area
 Manual side opening door to port side deck
 Microwave/oven AC

Main Helm Console and Observation Area

2 x upholstered helm seats with electric operation
 Console with walnut effect fascia
 Hydraulic power steering
 Steering wheel
 Radar/chart plotter with GPS
 Autopilot
 Depth and speed displays
 VHF radio dual station
 Magnetic compass
 Horn control
 Switch panels
 Remote spotlight control
 Trim tab controls
 Rudder indicator
 Analogue engine instrumentation
 Fresh water gauge
 Fuel gauge
 Cigar lighter
 Main control and monitoring panel (AC/DC) with generators control
 Monitoring panel for fire detection system
 Windscreen wiper and washer controls
 Glass holder
 Screen demister
 Manual side opening door to starboard side deck
 Sofa seat on port side
 Air conditioning
 Halogen overhead lighting 24v
 Fitted carpet
 Double AC sockets (port side)
 2 x telephone points (port side)
 Staircase forward leading to VIP stateroom

Forward VIP Stateroom

Stairs leading from main helm area
 Double berth
 Foam mattress for berth
 Storage beneath berth
 Drawers in berth end
 Bedside lights 24v
 Dressing table
 Stool for dressing table
 Sofa
 Air conditioning
 LCD flatscreen television (42") on bulkhead
 DVD/CD player with two speakers

Halogen overhead lighting 24v
Two fixed portholes on each side with blind
Skylight with blind
Double AC socket
Fitted carpet
Sensor connected to fire detection system
2 x telephone points (port bedside and dressing table)
Doors to en suite and walk-in wardrobe

Forward VIP Walk-in Wardrobe

Hanging rails
Drawers
Shelves
Full-length mirror
Halogen overhead lighting 24v
AC socket
Fitted carpet
Door to stateroom

Forward VIP En Suite

Tecma toilet 24v
Vanity top and flooring
Large ceramic washbasin
Taps and accessories (toothbrush and glass holder, soap dispenser, towel rails and towels)
Separate shower compartment
Acrylic folding shower door
Air conditioning outlet
Extractor fan
Mirrored vanity unit
Shelved cupboard
Halogen overhead lighting 24v
Opening porthole with mosquito screen and venetian blind
Shaver socket 240/110v
Door to stateroom

Lower Deck Lobby

Stairs leading down from main deck
saloon area
Halogen overhead lighting 24v
AC socket
Fitted carpet
Large bilge access hatch
Sensor connected to fire detection system
Doors leading to lower deck guest accommodation (excluding forward VIP stateroom)

Midships Master Stateroom

Double berth
Foam mattress for berth
Storage beneath berth
Drawers in berth end and sides
Bedside units with storage
Bedside lights 24v
Dressing table
Pouffe for dressing table
Sofa
Air conditioning
Halogen overhead lighting 24v
Table lamp
Organic porthole arrangement with blind on each side (outer two portholes openable with mosquito screens)
Double AC sockets
2 x telephone points (dressing table and starboard bedside table)
LCD flatscreen television (42") on bulkhead
DVD/CD/radio surround system with two speakers and sub woofer (Bose 321)
Fitted carpet
Escape hatch on forward bulkhead
Doors to en suite and walk-in wardrobe

Midships Master Walk-in Wardrobe

Hanging rails
Drawers
Shelves
Full length mirror
Halogen overhead lighting 24v
AC socket
Fitted carpet
Door to stateroom

Midships Master En-Suite

Tecma toilet 24v
Bidet
Vanity top and flooring
Large ceramic washbasin
Taps and accessories (toothbrush and glass holder, soap dispenser, towel rails and towels)
Separate shower compartment
Acrylic folding shower door
Extractor fan
Air conditioning outlet
Mirror
Halogen overhead lighting 24v
Opening porthole with mosquito screen and venetian blind
Shaver socket 240/110v
Door to stateroom

Aft Starboard Guest Cabin

Two single berths
Pullman Bunk
Foam mattresses for berths
Under berth stowage
2 x reading lights 24v
Wardrobe
Air conditioning
Halogen overhead lighting 24v
Organic porthole arrangement with blind (outer two portholes openable with mosquito screens)
Double AC socket
Sensor connected to fire detection system
LCD flatscreen television (19")
DVD/CD player with two speakers
Telephone point
Fitted carpet
Doors to en suite and lobby

Aft Starboard En-Suite

Tecma toilet 24v
Vanity top and flooring
Washbasin
Taps and accessories (toothbrush and glass holder, soap dispenser, towel rails and towels)
Separate shower compartment
Acrylic folding shower door
Extractor fan
Air conditioning outlet
Vanity unit
Shelved cupboard
Halogen overhead lighting 24v
Opening porthole with mosquito screen and venetian blind
Shaver socket 240/110v
Door to guest cabin

Aft Port Guest Cabin

Two single berths
Pullman Bunk
Foam mattresses for berths
Under berth stowage
2 x reading lights 24v
Wardrobe

Air conditioning
 Halogen overhead lighting 24v
 Organic porthole arrangement with blind (outer two portholes openable with mosquito screens)
 Double AC socket
 Sensor connected to fire detection system
 LCD flatscreen television (19")
 DVD/CD player with two speakers
 Telephone point
 Fitted carpet
 Doors to en suite and lobby

Aft Port En-Suite

Tecma toilet 24v
 Vanity top and flooring
 Washbasin
 Taps and accessories (toothbrush and glass holder, soap dispenser, towel rails and towels)
 Separate shower compartment
 Acrylic folding shower door
 Extractor fan
 Air conditioning outlet
 Vanity unit
 Shelved cupboard
 Halogen overhead lighting 24v
 Opening porthole with mosquito screen and venetian blind
 Shaver socket 240/110v
 Door to guest cabin

Aft Crew Mess

Access door from stern
 Sink with tap
 Worktop with undercounter storage
 Air conditioning
 Small microwave
 Undercounter fridge
 AC sockets
 Washer/dryer AC
 Telephone point
 Sensor connected to fire detection system
 Halogen overhead lighting 24v
 Opening porthole with mosquito screen and venetian blind
 Seating area
 Table
 LCD flatscreen television (19")
 DVD/CD with two speakers
 Non slip safety flooring
 Doors to crew cabins and crew toilet/shower
 Watertight door to engine room

Crew Cabin

2 x Twin bunk berths
 Foam mattresses for berths
 Reading lights 24v
 Air conditioning
 Wardrobe
 Full length mirror on back of cabin door
 Halogen overhead lighting 24v
 Double AC socket
 Telephone point
 Sensor connected to fire detection system
 CD/radio with two speakers
 Fitted carpet
 Opening porthole with mosquito screen and curtains
 Door to crew mess

Informations générales

Fabricant:	Sunseeker
Modèle:	88 Yacht
An:	2011
Condition:	Usagé

Moteur

Moteur:	CATERPILLAR C32 ACERT, 1902 hp
Type de moteur:	
Type de carburant:	Diesel

Des mesures

Longueur:	26.87 m (88.16 ft)
Largeur:	6.22 m (20.41 ft)
Profond:	3.3 m (10.83 ft)
Poids:	71300 ()

Hébergement

Cabines:	0
Couchettes:	0



Image courtesy of JD Yachts



Image courtesy of JD Yachts



Image courtesy of JD Yachts



Image courtesy of JD Yachts



Image courtesy of JD Yachts



Image courtesy of JD Yachts



Image courtesy of JD Yachts



Image courtesy of JD Yachts



Image courtesy of JD Yachts



Image courtesy of JD Yachts



Image courtesy of JD Yachts



Image courtesy of JD Yachts



Image courtesy of JD Yachts



Image courtesy of JD Yachts



Image courtesy of JD Yachts



Image courtesy of JD Yachts



Image courtesy of JD Yachts



Image courtesy of JD Yachts



Image courtesy of JD Yachts



Image courtesy of JD Yachts



Image courtesy of JD Yachts



Image courtesy of JD Yachts



Image courtesy of JD Yachts



Image courtesy of JD Yachts



Image courtesy of JD Yachts



Image courtesy of JD Yachts



Image courtesy of JD Yachts



Image courtesy of JD Yachts



Image courtesy of JD Yachts



Image courtesy of JD Yachts



Image courtesy of JD Yachts



Image courtesy of JD Yachts



Image courtesy of JD Yachts



Image courtesy of JD Yachts



Image courtesy of JD Yachts



Image courtesy of JD Yachts



Image courtesy of JD Yachts



Image courtesy of JD Yachts



Image courtesy of JD Yachts



Image courtesy of JD Yachts



Image courtesy of JD Yachts



Image courtesy of JD Yachts



Image courtesy of JD Yachts



Image courtesy of JD Yachts



Image courtesy of JD Yachts



Image courtesy of JD Yachts



Image courtesy of JD Yachts



Image courtesy of JD Yachts



Image courtesy of JD Yachts



Image courtesy of JD Yachts



Image courtesy of JD Yachts



Image courtesy of JD Yachts



Image courtesy of JD Yachts



Image courtesy of JD Yachts



Image courtesy of JD Yachts



Image courtesy of JD Yachts



Image courtesy of JD Yachts



Image courtesy of JD Yachts



Image courtesy of JD Yachts



Image courtesy of JD Yachts



Image courtesy of JD Yachts



Image courtesy of JD Yachts



Image courtesy of JD Yachts



Image courtesy of JD Yachts



Image courtesy of JD Yachts



Image courtesy of JD Yachts

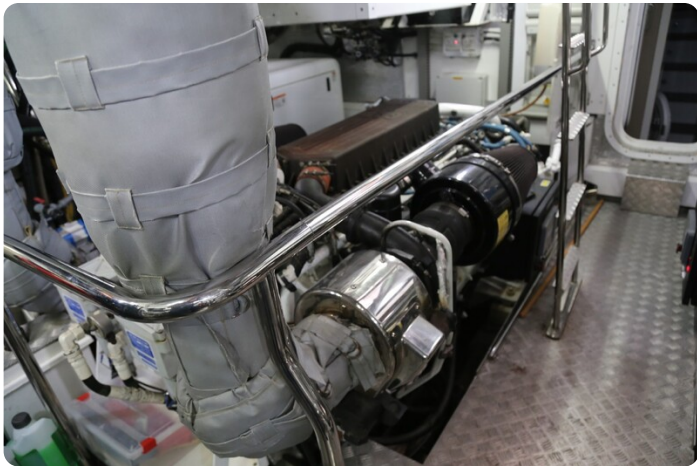


Image courtesy of JD Yachts



Image courtesy of JD Yachts



Image courtesy of JD Yachts



Image courtesy of JD Yachts



Image courtesy of JD Yachts

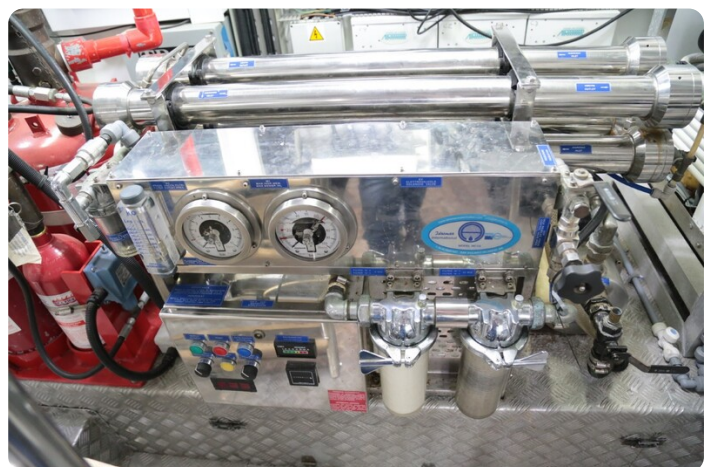


Image courtesy of JD Yachts



Image courtesy of JD Yachts



Image courtesy of JD Yachts



Image courtesy of JD Yachts



Image courtesy of JD Yachts

JD YACHTS LIMITED

80 THE ESPLANADE

DT4 7AA WEYMOUTH

Royaume-Uni

Téléphone: +44 (0) 1305 766504

<http://jdyachts.com>



 YACHTS.