



Starfish 8 with extended wheelhouse

£19,500 • Brightlingsea United Kingdom (UK) • Used • 1988

Presented by

Peter Marchant
Phone: 44(0)1206302003

Morgan Marine

The Boatyard, Shipyard
Estate
CO7 0AR Colchester
United Kingdom (UK)



Details

| | |
|--------------|--------------------------|
| Make: | Starfish 8 |
| Model: | with extended wheelhouse |
| Year: | 1988 |
| Condition: | Used |
| Engine: | , 300 hp |
| Engine type: | |
| Fuel type: | Diesel |
| Length: | 8.12 m (26.64 ft) |
| Beam: | 2.85 m (9.35 ft) |
| Cabins: | 0 |
| Berths: | 0 |



Morgan Marine



7zea.com

Description

EN

Starfish 8 with extended wheelhouse powered by a Ford 120hp inboard diesel engine just in at Morgan Marine. This boat is perfect for days out on the water fishing with family and friends or taking a nice cruise. This boat is bursting with options including Garmin Echo 500c fish finder, Raymarine plotter, Raymarine VHF radio, Autohelm ST300 autopilot, electric windlass, diesel heating, Solar power, fishing rod holders on the roof, large cockpit and much more! Call now for early viewing!

Cabin: Forward separate storage compartment with toilet. No berth area. Galley with 2x burner stove, oven, fridge and sink (with cold water pump). Lots of lockers. Carpeted flooring. Saloon L shaped cushioned seating.

Cockpit: Huge cockpit - great for fishing. Heavy duty storage lockers - step to side deck. Wheelhouse with aft door, good visibility - sliding windows, windscreen wiper and roof hatch. Good headroom throughout. Port side helm position with wheel, engine controls, switch panel, gauges and navigation electronics. Cockpit wheelhouse with wheel and throttle control. Cockpit stern bench seating with removable cushions. Removable cushions for cockpit engine lid.

Electronics: Garmin Echo 500c fish finder. Raymarine plotter. Raymarine VHF radio. Autohelm ST300 autopilot. 4x New batteries. 12v Rewire. Roof spot light. Horn. Solar power controller. Anchor light. Navigation lights. Switch panel. Stern light. Automatic bilge pump. Engine gauges (RPM, oil, fuel, volt, and temperature). JVC radio. TV.

Machinery: Ford 120hp inboard diesel engine. New gearbox. Re-pitched and balanced prop. Eberspacher diesel heater.

General information

| | |
|------------|--------------------------|
| Make: | Starfish 8 |
| Model: | with extended wheelhouse |
| Year: | 1988 |
| Condition: | Used |

Engine

| | |
|--------------|----------|
| Engine: | , 300 hp |
| Engine type: | |
| Fuel type: | Diesel |

Measurements

| | |
|---------|-------------------|
| Length: | 8.12 m (26.64 ft) |
| Beam: | 2.85 m (9.35 ft) |
| Deep: | 1 m (3.28 ft) |
| Weight: | 0 () |

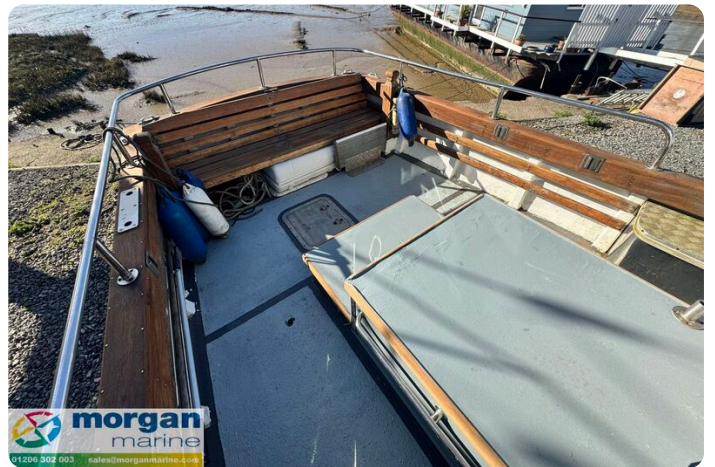
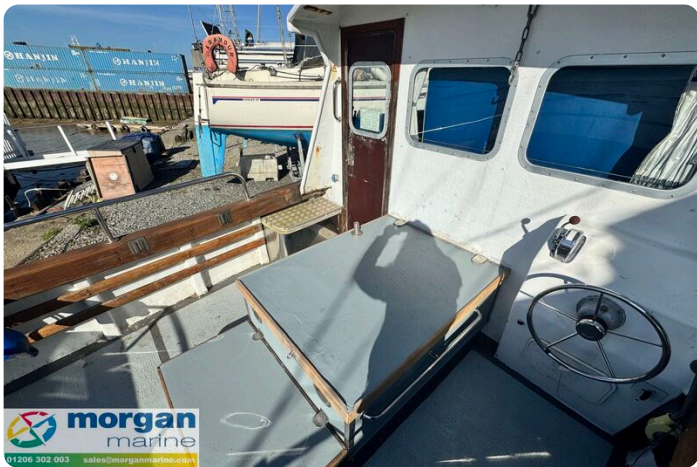
Accommodation

| | |
|---------|---|
| Cabins: | 0 |
| Berths: | 0 |

















Morgan Marine

The Boatyard, Shipyard Estate
CO7 0AR Colchester
United Kingdom (UK)

Phone: 44(0)1206302003

<https://morganmarine.com>

