



Sealine SC35

£132,995 • Brightlingsea United Kingdom (UK) • Used • 2011

Presented by

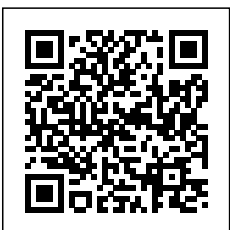
Peter Marchant
Phone: 44(0)1206302003

Morgan Marine
The Boatyard, Shipyard
Estate
CO7 0AR Colchester
United Kingdom (UK)



Details

Make:	Sealine
Model:	SC35
Year:	2011
Condition:	Used
Engine:	, 300 hp
Engine type:	
Fuel type:	Diesel
Length:	11.1 m (36.42 ft)
Beam:	3.76 m (12.34 ft)
Cabins:	0
Berths:	0



Morgan Marine



7zea.com

Description

EN

2011 Sealine SC35 just in at Morgan Marine! This description is worth reading... A very special Sealine SC35 which benefits from a refit of over £20,000 during July 2025 making her one of the best examples on the market. Capable of hitting in excess of 30 knots from her Twin Volvo Penta D4 - 260s with only 260 hours accrued! During July 2025 she benefitted from a new roof canopy, New aft enclosure canopies, Full engine and sterndrive service, Full 3 stage cut and polish, Re antifouling and teak cleaning. This example also offers a great specification including Bow thruster, Diesel heating, full electronics suite and much more. The SC35 is a sleek and stylish sports cruiser that offers a combination of performance, comfort, and luxury - Designed in collaboration with Ocke Mannerfelt. This particular model was manufactured in 2011 and features a modern design with clean lines and a high-quality finish. Powered by twin Volvo Penta D4 260hp diesel engines, this SC35 offers impressive performance and handling. It has a top speed in excess of 30 knots and a cruising speed of 20 - 25 knots, making it suitable for coastal cruising and longer trips. This boat is a well-designed and well-equipped sports cruiser that offers a comfortable and luxurious experience on the water. Its combination of style, performance, and practicality makes this boat a popular choice for boaters looking for a versatile and enjoyable cruising experience! Contact Morgan Marine today for early viewing!

Cabin: Door double opening to forward double berth cabin, with hatch , hanging wardrobe and storage. Aft cabin with 3x separate single berths or a double bed conversion with a single bed to portside. Jack and Jill Ensuite heads with full height walk in shower, electric marine toilet with holding tank and vanity. Saloon with L shaped sofa with dining table. Above storage over L- Shaped sofa. Flat screen TV with storage unit and head storage. Skylight window in saloon with fitted blind. Good size galley with oven/gill, sink (hot and cold water), hob, fridge and lots of storage. Carpet throughout. Fire extinguisher.

Cockpit: Large open cockpit space with great sociable spaces. Full length material roof that manually sides all the way back to create a lovely open air space to enjoy. Large L shaped cockpit sofa with separate port side seating. Folding teak table. Cockpit wet bar with sink, fridge and electric BBQ. Double helm bolster seats with large storage locker underneath. Engine bay access hatch.

Electronics: Garmin GPS Map 5012 GPS / Plotter with radar. Garmin VHF radio. Navigation lights. Plastimo compass. Raymarine ST60 speed and depth display. Rudder indicator on helm. RPM, fuel, trim, battery, oil and temperature gauges. Volvo Penta displays. Battery isolator switches. Horn. Electric windscreen wipers. Cockpit lighting and deck LED lights. Battery charger.

Machinery: 2x Volvo D4 260HP stern drive engines. Electric trim tabs. Webasto diesel heating (with additional outlets in Cockpit). Bow thruster. Fuel capacity - 2 x 375 litres tanks. Fresh water capacity - 1 x 214 litre tank. Holding tank - 75 litres.

General information

Make:	Sealine
Model:	SC35
Year:	2011
Condition:	Used

Engine

Engine:	, 300 hp
Engine type:	
Fuel type:	Diesel

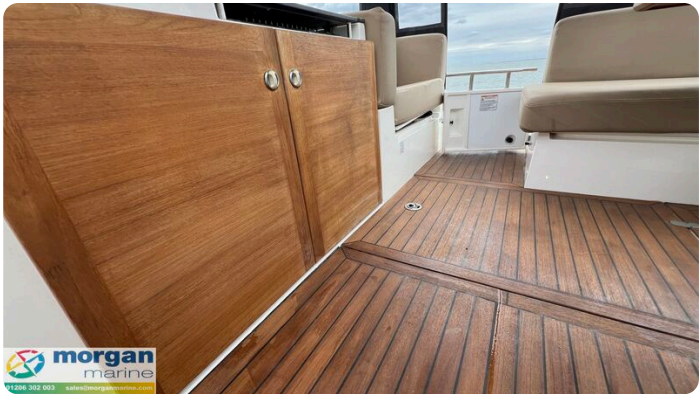
Measurements

Length:	11.1 m (36.42 ft)
Beam:	3.76 m (12.34 ft)
Deep:	1.09 m (3.58 ft)
Weight:	0 ()

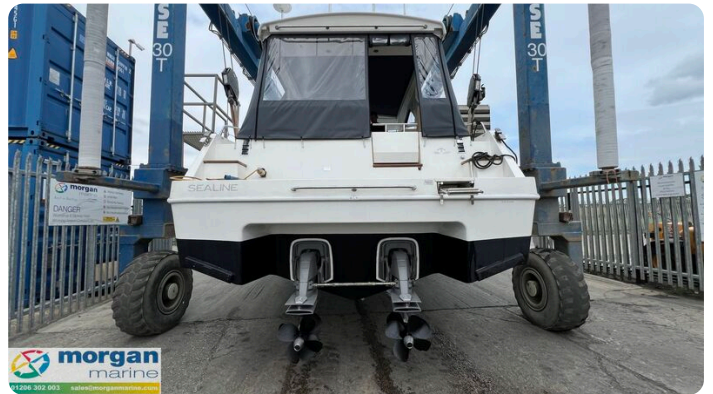
Accommodation

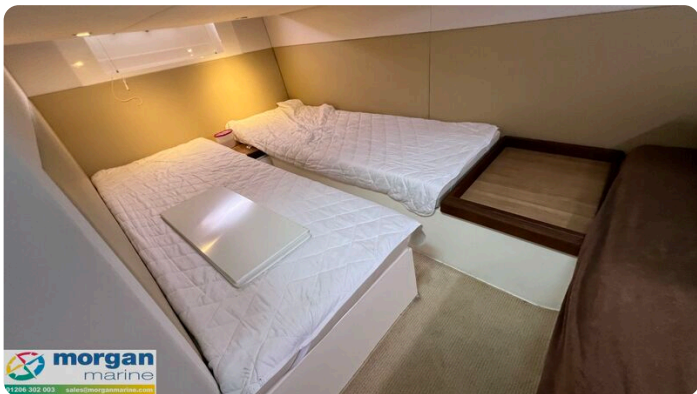
Cabins:	0
Berths:	0

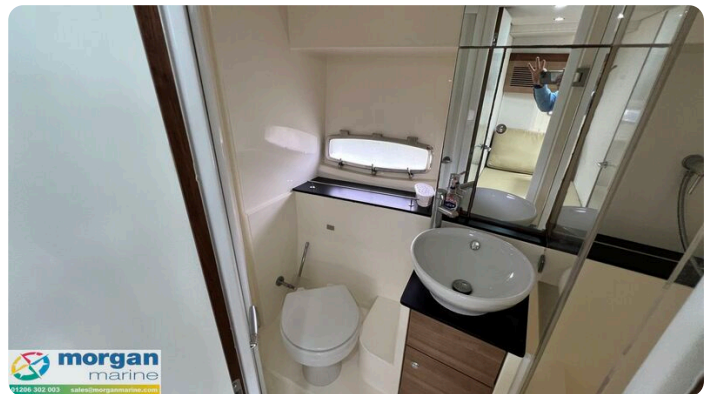
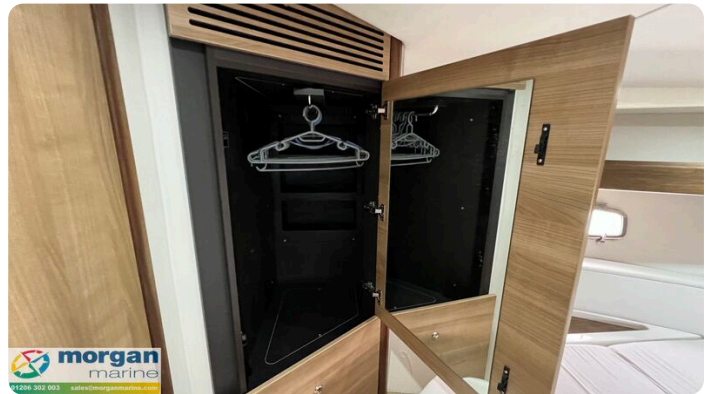
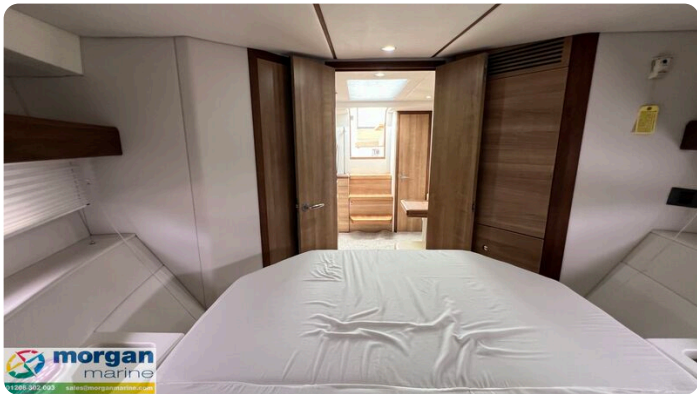


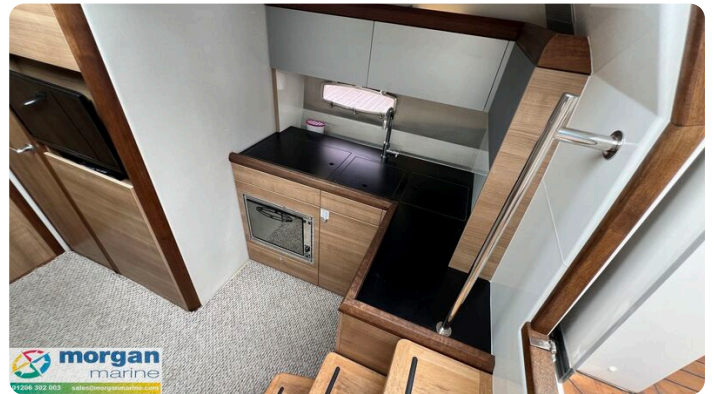
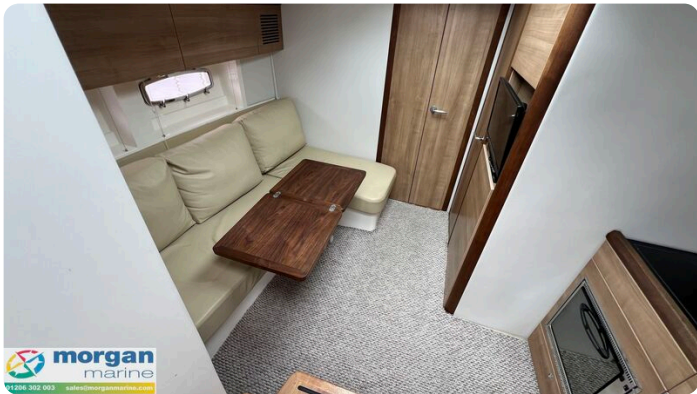
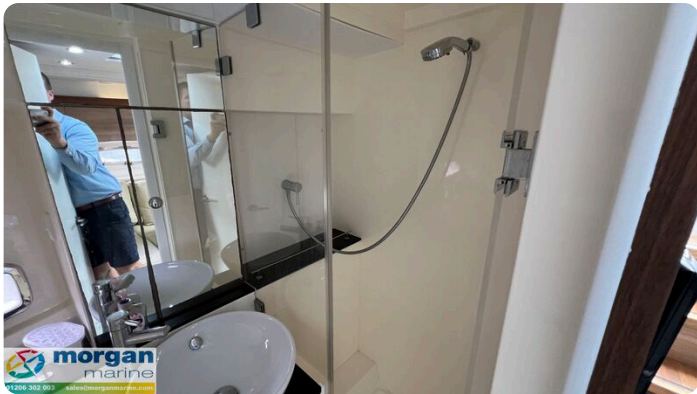
















Morgan Marine

The Boatyard, Shipyard Estate
CO7 0AR Colchester
United Kingdom (UK)

Phone: 44(0)1206302003

<https://morganmarine.com>

