



# Nimbus Weekender 9 (W9)

£189,995 • Brightlingsea United Kingdom (UK) • New • 2025

## Presented by

Peter Marchant  
Phone: 44(0)1206302003

## Morgan Marine

The Boatyard, Shipyard  
Estate  
CO7 0AR Colchester  
United Kingdom (UK)

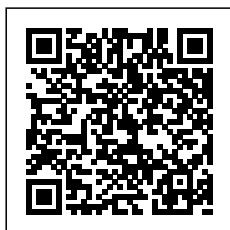


## Details

|              |                   |
|--------------|-------------------|
| Make:        | Nimbus            |
| Model:       | Weekender 9 (W9)  |
| Year:        | 2025              |
| Condition:   | New               |
| Engine:      | , 300 hp          |
| Engine type: |                   |
| Fuel type:   | Gasoline          |
| Length:      | 9.35 m (30.68 ft) |
| Beam:        | 2.95 m (9.68 ft)  |
| Cabins:      | 0                 |
| Berths:      | 0                 |



Morgan Marine



7zea.com

# Description

EN  
Stylish, agile, and built for effortless day cruising, the Nimbus Weekender 9 (W9) X-Edition combines Scandinavian design with premium performance. Fitted with a powerful Mercury Verado V8-300 XL outboard, this sleek weekend boat delivers exhilarating speed, smooth handling, and low noise levels - plus a saving of over £47,000 on the RRP. With a spacious cockpit, sociable layout, and comfortable overnight accommodation, its ideal for spontaneous getaways or relaxed coastal cruising. The X-Edition adds exclusive detailing and upgraded features, bringing an extra edge of refinement to an already impressive package. CE category C for 8 people. This 2025 model year Nimbus Weekender 9 is available at Morgan Marine now. Note - library photos may not reflect specification of boat.

Cabin: The forward cabin features a cozy double berth and a dedicated wardrobe, as well as a separate toilet compartment equipped with an electric-flush head, sink, and shower - ensuring onboard convenience and privacy . To enhance onboard comfort, cabins are fitted with plush carpeting and curtains. Freshwater capacity of approximately 56 litres supports both the head and shower facilities. Includes Nimbus crockery & cutlery.

Cockpit: The spacious wheelhouse blends panoramic visibility with premium comfort. Laminated safety glass and a wide arched windscreen - complete with wiper, screen wash, and defroster - ensure excellent sightlines from both the helm and saloon. Inside, matte surface finishes help reduce glare and are simple to keep clean. Ergonomic helm seat, designed for both seated and standing positions. Port galley, which includes a sink and storage. The X-Edition adds exclusive touches throughout the cockpit, including a custom steering wheel, handles, and dark grey suede upholstery with matching cockpit cushions - elevating both comfort and style.

Electronics: Electrical canvas roof system including enclosed canopy. 2 x blue underwater lights. Remote control for bow thruster and windlasses. Isotherm 15l hot water system 230v. Chargemaster shore power 12/25a, 25m cable, 2x 230v outlets. Wireless charging nest for phone. Hifi Package JL MM105 stereo, 4x M6-650X speakers, MV600/6l amplifier, M610IB subwoofer, DAB antenna. Simrad NSX 12" plotter. Simrad xSonic SS60 sonar - thru-hull transducer. Simrad RS40 VHF + AIS receiver and antenna

Machinery: Mercury Verado V8-300 XL: propeller, VesselView 403, Active Trim - Cold Fusion White. Sleipner SE40 bow thruster. Zipwake dynamic trim control system 450mm. Webasto AT3900 heater / defroster system + 11.5L diesel tank.

## General information

|            |                  |
|------------|------------------|
| Make:      | Nimbus           |
| Model:     | Weekender 9 (W9) |
| Year:      | 2025             |
| Condition: | New              |

## Engine

|              |          |
|--------------|----------|
| Engine:      | , 300 hp |
| Engine type: |          |
| Fuel type:   | Gasoline |

## Measurements

|         |                   |
|---------|-------------------|
| Length: | 9.35 m (30.68 ft) |
| Beam:   | 2.95 m (9.68 ft)  |
| Deep:   | 0 m (0.00 ft)     |
| Weight: | 0 ( )             |

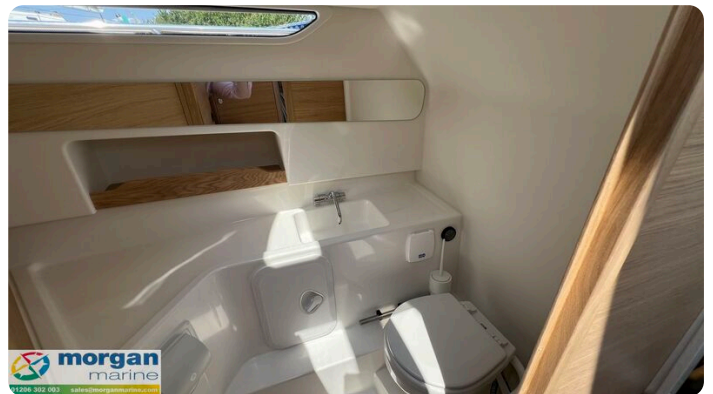
## Accommodation

|         |   |
|---------|---|
| Cabins: | 0 |
| Berths: | 0 |

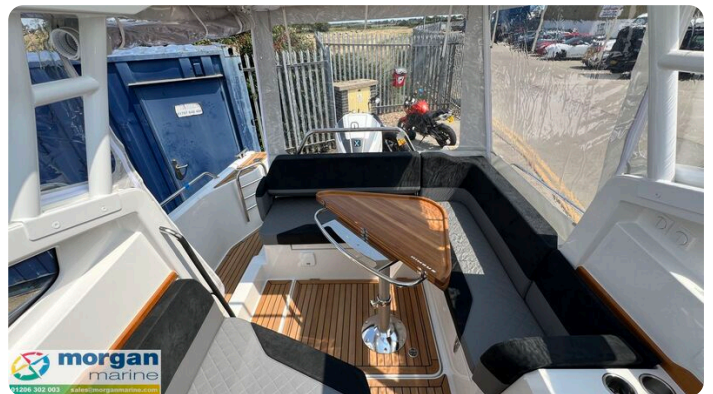
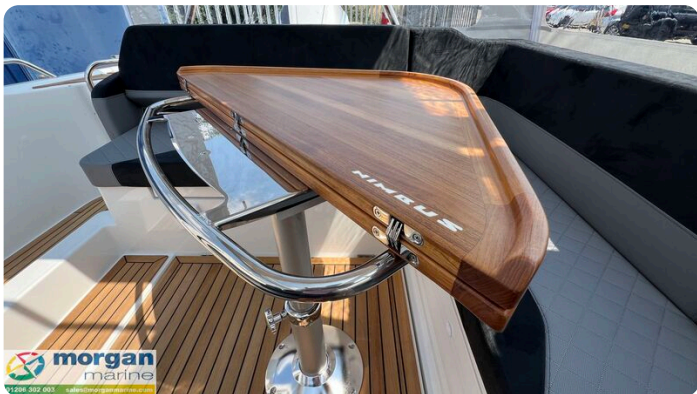












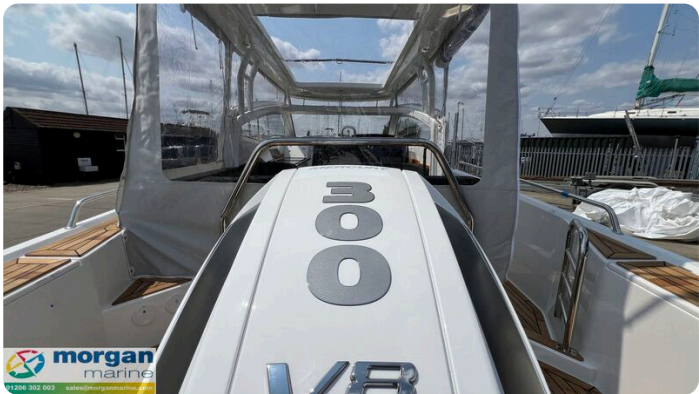








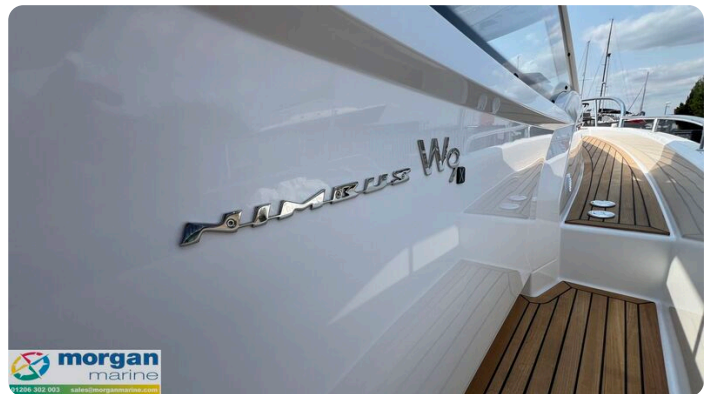
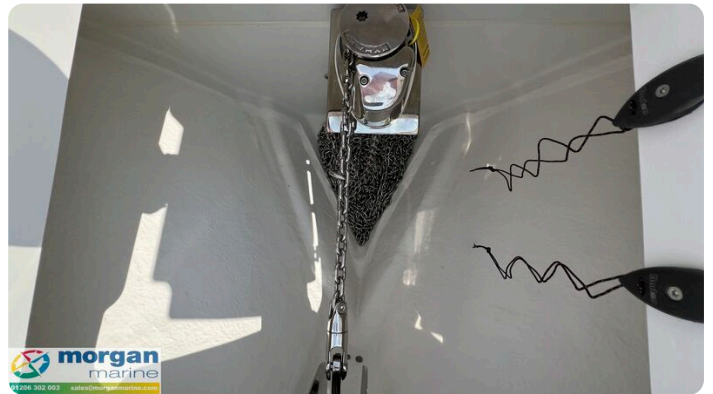






















**Morgan Marine**

The Boatyard, Shipyard Estate  
CO7 0AR Colchester  
United Kingdom (UK)

Phone: 44(0)1206302003

<https://morganmarine.com>

