



Nimbus Commuter 9 (C9)

£194,995 • Brightlingsea United Kingdom (UK) • New • 2024

Presented by

Peter Marchant
Phone: 44(0)1206302003

Morgan Marine
The Boatyard, Shipyard
Estate
CO7 0AR Colchester
United Kingdom (UK)

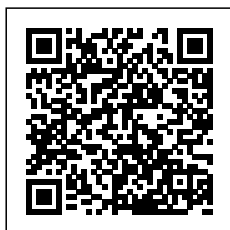


Details

Make:	Nimbus
Model:	Commuter 9 (C9)
Year:	2024
Condition:	New
Engine type:	
Fuel type:	Gasoline
Length:	9.35 m (30.68 ft)
Beam:	2.95 m (9.68 ft)
Cabins:	0
Berths:	0



Morgan Marine



7zea.com

Description

EN
New Nimbus Commuter 9 - boasting a huge specification and all of the must have options. This is a seriously capable vessel built for all-season functionality perfect for the UK, with a smart layout, exceptional performance, and signature Scandinavian styling. She is powered by a Cold Fusion White Mercury Verado V8-300 outboard offering performance in excess of 40 knots. The huge amount of extras include; galley, bow sunpad, two sunshades, teak and a massive electronics fitout with two 12" Simrad screens, Simrad VHF, Simrad autopilot, Simrad radar and hifi! Finished with a foiled hull in graphite and antifouled for improved performance + fuel efficiency; this boat is as capable offshore as it is stylish in the marina. Special stock offer - call for details. This Nimbus Commuter 9 is in stock at Morgan Marine and available for viewing 7 days a week. Call us for best stock deals!

Deck: Teak decking runs throughout the exterior, providing a classic, high quality surface. Comfort-focused features include sunseats (with cover) and an extended sunbed on the foredeck + sunshade, all in blue storm, plus foredeck railing cushions for lounging at anchor. Aft sofa facing backwards towards the sea + aft deck sunshade. Roof racks (rated to 60kg) and stern gates offer safety and versatility for travel or storage. Fishing rod holder on wheelhouse. Bow ladder. The bow is fitted with a windlass for effortless anchoring, while a foredeck table and mooring accessories round out a highly practical deck setup. Mooring package: 4x mooring lines, 4x fenders + fender covers. Foiled hull in oracal 932 graphit metallic.

Cabin: Inside, the forward cabin is finished in Nordic oak with double berth cushions and beige carpets. The port side galley includes hot water and an LPG gas cooktop, offering practicality for onboard meals; plus a Nimbus cutlery and crockery set. Separate toilet compartment on starboard side. Extra portlights brighten the cabin space. In the saloon, the sofa converts to an additional berth for both comfort and flexibility. The Nimbus pillow set completes a warm, welcoming interior. Additional convenience comes from black-water overboard discharge.

Cockpit: Wheelhouse with port and starboard side doors, aft window, large windscreen (with cover) and manual glass roof hatch (with blinds). C-shape seating to aft (converts to additional berth) and removable table. Helm and co-pilot bolster seats for comfortable sitting or standing. Large dash with full engine controls and twin Simard 12" displays.

Electronics: At the helm, 2x Simrad NSX 12" plotters deliver crystal-clear navigation, supported by a Simrad xSonic sonar - Bronze HDI XDCR, Hybrid Dual Imaging thru-hull transducer for accurate depth and seabed readings. Simrad autopilot + OP12 controller, HALO20+ radar and Precision 9 compass (for radar overlay / autopilot). Simrad RS40 VHF with AIS receiver and antenna. Hifi package - Clarion CMM30 stereo, 2x CMS651 speakers in cockpit. The electronics suite provides great navigation and communication, making the C9 well-suited to coastal cruising or busy waterways. The helm layout is clean and ergonomic, putting essential information and controls at your fingertips. Onboard power and electronics are supported by the engine system and include the full Simrad suite for navigation, sonar, and communication. Isotherm 15L hot water system. Chargemaster shore power 12/25a, 25m cable, 2x 230v outlets. 2x under water lights - blue. Search light on stainless steel mast with joystick. Wireless charging nest for phone. Remote control for bow thruster and windlass.

Machinery: The C9 is powered by a Mercury Verado V8-300 XL outboard engine in Cold Fusion White, delivering strong, responsive performance backed by Active Trim and Mercury Upgrade package with VesselView Mobile and First Mate for smart engine management. Manoeuvrability is enhanced by a

bow thruster and the Zipwake dynamic trim control system (450mm), giving you smooth handling and stability even at speed or in crosswinds. Able to handle handle long distances or short hops with ease; this boat is built to go the distance. Fuel capacity: 320L. Fresh water capacity: 56L. CE Category C8.

General information

Make:	Nimbus
Model:	Commuter 9 (C9)
Year:	2024
Condition:	New

Engine

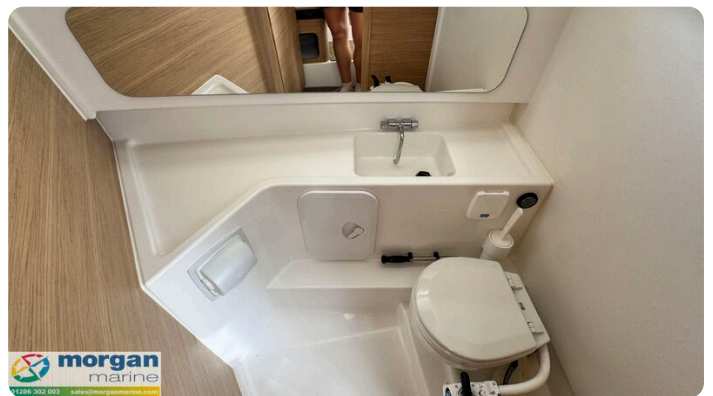
Engine type:	
Fuel type:	Gasoline

Measurements

Length:	9.35 m (30.68 ft)
Beam:	2.95 m (9.68 ft)
Deep:	0 m (0.00 ft)
Weight:	0 ()

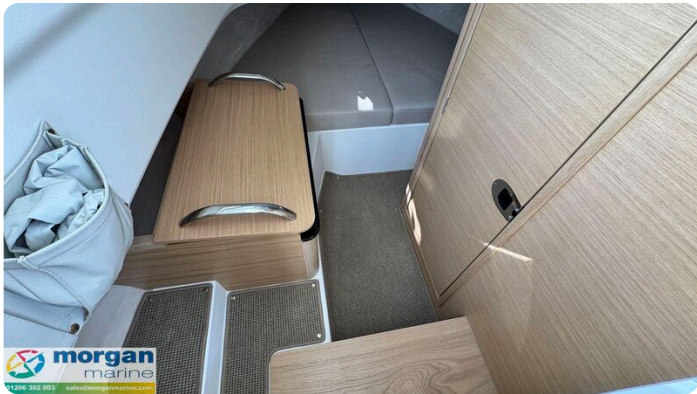
Accommodation

Cabins:	0
Berths:	0



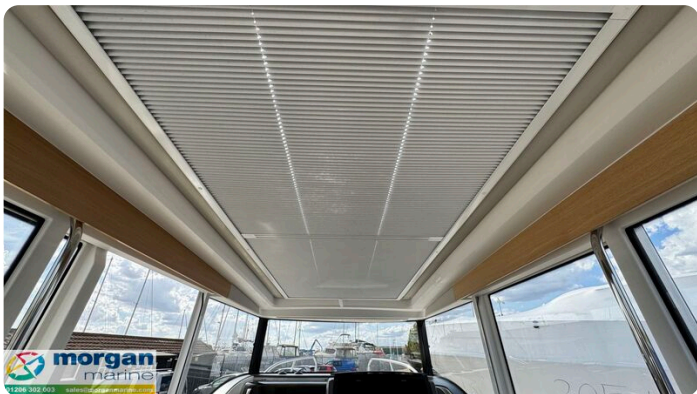
















Morgan Marine

The Boatyard, Shipyard Estate
CO7 0AR Colchester
United Kingdom (UK)

Phone: 44(0)1206302003

<https://morganmarine.com>

