



Motorsleepboot 18.25

€49,500 • Franeker Netherlands • Used • 1983

Presented by

Sjoerd Kampen
Phone: 0031(0)6-54723943

Scheepsmakelaardij Goliath

Hendrik Bulthuisweg 2
8606 KB SNEEK
Netherlands

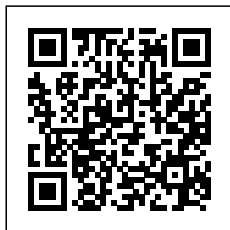


Details

Make:	Motorsleepboot
Model:	18.25
Year:	1983
Condition:	Used
Engine type:	
Length:	18.25 m (59.88 ft)
Beam:	5.05 m (16.57 ft)
Cabins:	0
Berths:	0



Scheepsmakelaar
dij Goliath



7zea.com

Description

EN

Push and pull boat suitable for use up to 12 people. Vertical clearance approx. 3.80. Displacement approx. 80 tons. Underwatership has been renewed. Certificate for barges valid until 31-05-2026. Surface report available.

NL

Duw- en sleepboot geschikt voor gebruik tot 12 personen. Doorvaarthoogte ca. 3.80. Waterverplaatsing ca. 80 ton. Onderwaterschip is vernieuwd. Certificaat voor Binnenschepen geldig tot 31-05-2026. Vlakrapport aanwezig.

DE

Schub- und Zugboot für bis zu 12 Personen. Vertikaler Abstand ca. 3,80. Verdrängung ca. 80 Tonnen. Die Unterwasserschaft wurde verlängert. Zertifikat für Binnenschiffe gültig bis 31-05-2026. Oberflächenbericht verfügbar.

FR

Bateau à pousser et à tirer pouvant accueillir jusqu'à 12 personnes. Dégagement vertical d'environ 3,80. Déplacement d'environ 80 tonnes. Underwatership a été renouvelé. Certificat pour les barges valable jusqu'au 31-05-2026. Rapport de surface disponible.

General information

Make:	Motorsleepboot
Model:	18.25
Year:	1983
Condition:	Used
Engine type:	

Measurements

Length:	18.25 m (59.88 ft)
Beam:	5.05 m (16.57 ft)
Deep:	2.08 m (6.82 ft)

Accommodation

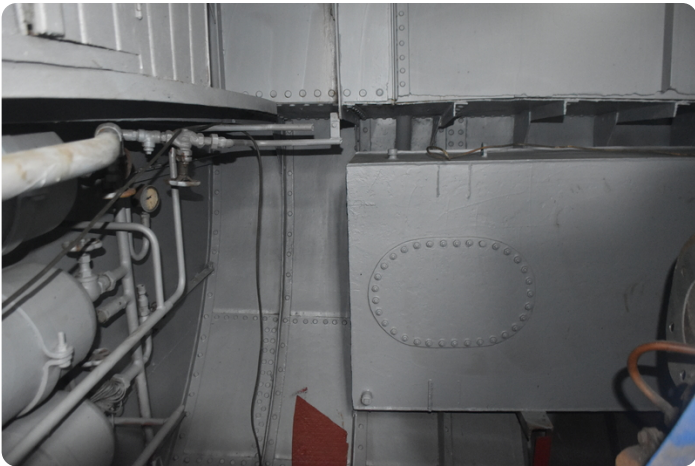
Cabins:	0
Berths:	0







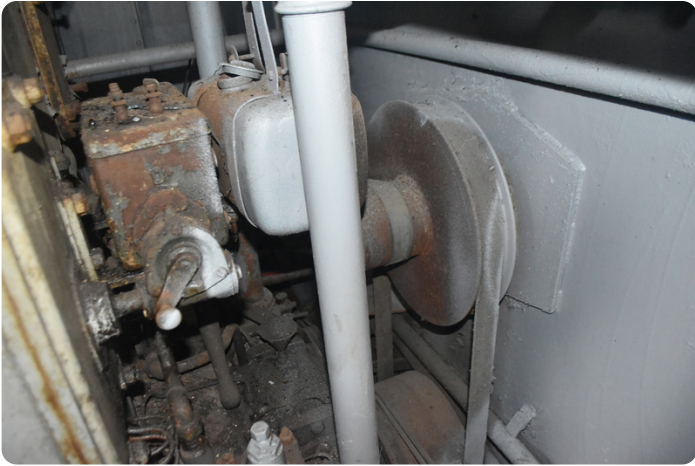
















Scheepsmakelaardij Goliath

Hendrik Bulthuisweg 2

8606 KB SNEEK

Netherlands

Phone: 0031(0)6-54723943

<https://www.scheepsmakelaardijgoliath.nl>

