



# Kingfisher 26

£995 • Brightlingsea Royaume-Uni • Usagé • 1969

## Présenté par

Peter Marchant  
Phone: 44(0)1206302003

**Morgan Marine**  
The Boatyard, Shipyard  
Estate  
CO7 0AR Colchester  
Royaume-Uni

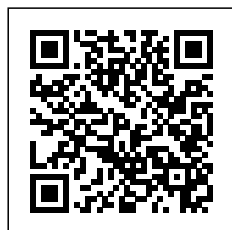


## Détails

Fabricant:	Kingfisher
Modèle:	26
An:	1969
Condition:	Usagé
Moteur:	, 435 hp
Type de moteur:	
Type de carburant:	Diesel
Longueur:	7.9 m (25.92 ft)
Largeur:	2.3 m (7.55 ft)
Cabines:	0
Couchettes:	0



Morgan Marine



7zea.com

## La description

EN

Kingfisher 26 Pharmacia - project boat. Built in 1969, GRP construction with grey topsides, twin bilge keels, self draining aft cockpit with tiller steering. It has a masthead Bermudad sloop rig, and her interior has 4 berths in 2 cabins with around 6ft headroom. This is a project boat for the right Buyer. The cabin requires attention as there is some rain water damage, but for this price we believe Pharmacia to be a great buy. Viewing highly recommended - full paperwork of boat can be seen. Why not contact Morgan Marine to talk further about this Bargain Bilge Keeler.

Deck: Stainless steel Pushpit, pulpit and guard wires. Tiller steering. Cleats. Bow roller. Rigging requires attention.

Cabin: 4 berths in 2 cabins including 6ft V shaped berths in the separate forebrain. Port and starboard side storage. 2x Berths in saloon.

Cockpit: Bench style seating. Storage under bench seating. Tiller steering. Considerable cockpit space for both captain and crew.

Electronics: N/A

Machinery: Kubota 17hp 3 cylinder inboard diesel engine (new in 1985 and rebuilt in 1996). 30 Gallon fuel capacity in 2x tanks. Running conditions can not be confirmed.

### Informations générales

Fabricant:	Kingfisher
Modèle:	26
An:	1969
Condition:	Usagé

### Moteur

Moteur:	, 435 hp
Type de moteur:	
Type de carburant:	Diesel

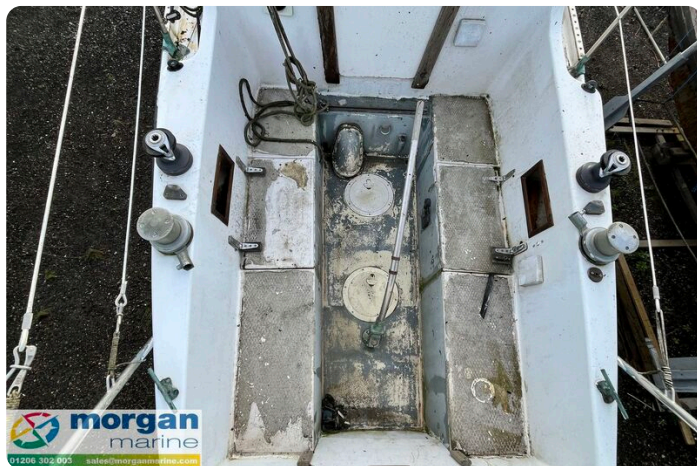
### Des mesures

Longueur:	7.9 m (25.92 ft)
Largeur:	2.3 m (7.55 ft)
Profond:	0.9 m (2.95 ft)
Poids:	0 ()

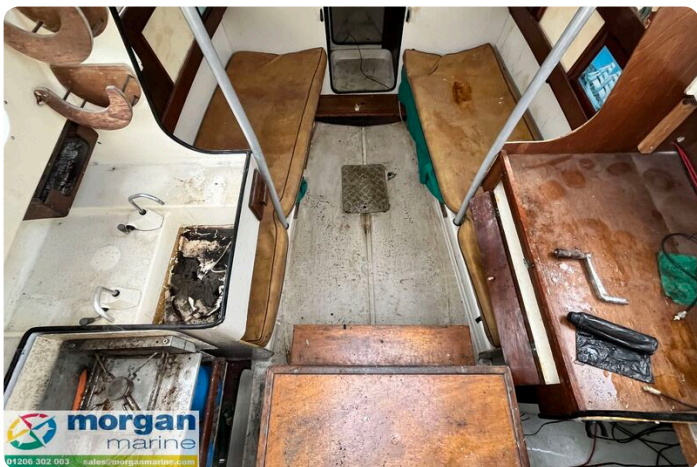
### Hébergement

Cabines:	0
Couchettes:	0

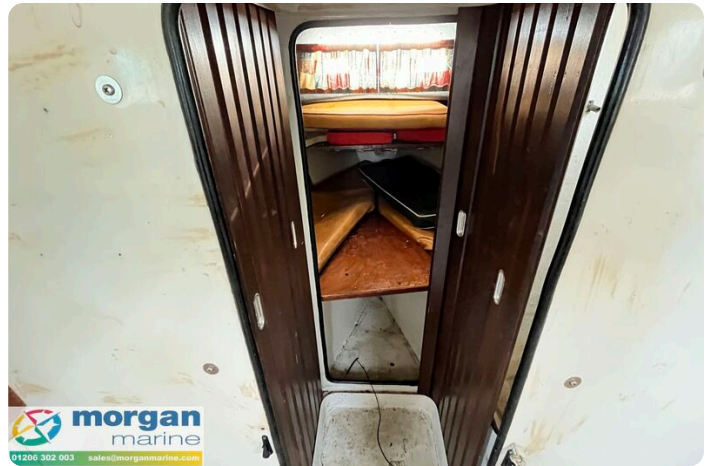
## Images













**Morgan Marine**

The Boatyard, Shipyard Estate  
CO7 0AR Colchester  
Royaume-Uni

Téléphone: 44(0)1206302003

<https://morganmarine.com>

