

Jeanneau SUN MAGIC 44

€35,000 • Adria Italy • Used • 1989

Presented by

Jan Spengler
Phone: +49 4101 5155566

**Michael Schmidt &
Partner Yachthandels
GmbH**

Rübekamp 5
25421 Pinneberg
Germany



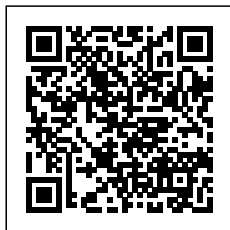
Michael Schmidt & Partner
International Yachtbrokers

Details

Make:	Jeanneau
Model:	SUN MAGIC 44
Year:	1989
Condition:	Used
Engine:	Yanmar 4JH-TE, 55 hp
Engine type:	
Fuel type:	Diesel
Fuel tank:	220 ()
Length:	13.33 m (43.73 ft)
Beam:	4.23 m (13.88 ft)
Cabins:	0
Berths:	0



Michael Schmidt &
Partner Yachthandels
GmbH



7zea.com

Description

EN

Epoxy treatment on ballast 7/23
alternator 12V 6/24

Diesel tank cleaning 7/22
Mainsail 6/22, Genoa 5/17
Boiler 11/2

Steering bearings 11/21
refrigerator 7/13

Replacement upholstery bow and stern cabin
cradle for winter storage

The teak deck needs attention

Photo documentation available

Schmidt & Partner
International Yachtbrokers s.r.l.

Piazzetta dell' Imbarcadero 11
I - 33050 Aprilia Marittima/Latisana (UD)
Tel.: +39 0431 53711

Navigation equipment:
Radar Antenna, MeteoFax.

Staging and technical:
Anchor (+ 80 m 10mm chain/Kette/catena), Water pressure
pump, Deck Shower, cradle, Fenders, Manual Bilge Pump,
Seawater Pump, Shorepower connector, Electric Windlass,
swimming ladder, cockpit table, Tender.

Domestic Facilities onboard:
Warm Water System, 12V Outlets, 220V Outlets.

Entertainment:
Speakers, Hi-Fi.

Sails accessories:
Jib Furling System, Lazy Jack, Backstay tensioner, Mainsheet
traveller, Vang.

Kitchen and appliances:
Galley, Burner.

Upholstery:
Cockpit Cushions, Boat cover.

Accessories notes:
some halyards, sheets and manouvers new
Stainless steel protection on the bow stem
spi pole

IT

trattamento epossidico sulla zavorra 7/23
alternatore 12V 6/24

pulizia serbatoio diesel 7/22
randa 6/22, genoa 5/17
boiler 11/2

boccole timoneria 11/21
frigorifero 7/13

tappezzeria sostituita cabina prua e poppa
invaso

La coperta in teak necessita attenzione
documentazione fotografica disponibile

Schmidt & Partner
International Yachtbrokers s.r.l.

Piazzetta dell' Imbarcadero 11
I - 33050 Aprilia Marittima/Latisana (UD)
Tel.: +39 0431 53711

Strumentazione elettronica di navigazione:
Antenna radar, MeteoFax.

Allestimento tecnico e di coperta:
Ancora (+ 80 m 10mm chain/Kette/catena), Autoclave, Doccia
esterna, Invaso, Parabordi, Pompa di sentina manuale, Pompa
per Acqua di Mare, Presa 220V banchina, Salpa Ancore
Elettrico, Scaletta da bagno, Tavolo pozzetto, Tender.

Dotazioni domestiche di bordo:
Boiler, Prese interne 12v, Prese interne 220v.

Intrattenimento:
Altoparlanti, Stereo.

Accessori Vele:
Avvolgi Fiocco, Lazy Jack, Tenditore strallo di poppa, Trasto
randa, Vang rigido.

Cucina ed elettrodomestici:
Cucina, Fornello.

Tappezzerie:
Cuscineria Pozzetto, Telo copribarca.

Note accessori:
alcune drizze, scotte e manovre nuove
protezione in acciaio inox in prua
tangone spi

FR

Traitement époxy sur ballast 23/07
alternateur 12V 6/24

Nettoyage du réservoir diesel 22/07
Grand-voile 22/06, Gênes 17/05

Chaudière 11/2

Silents de direction 11/21

Frigo 13/7

Remplaçant la sellerie de la cabine avant et arrière
Réservoir

Le deck en teck a besoin d'attention

Documentation photographique disponible

Schmidt & Partner
International Yachtbrokers s.r.l.

Piazzetta dell' Imbarcadero 11
I - 33050 Aprilia Marittima/Latisana (UD)
Tel. : +39 0431 53711

Equipement électronique de navigation:
Antenne radar, MeteoFax.

Equipement de pont:
Ancre (+ 80 m 10mm chain/Kette/catena), Eau sous pression,
Douche de cockpit, Ber, Défenses, Pompe de cale manuelle,
Pompe à Eau de Mer, Prise de quai, Guindeau électrique,
Echelle de bain, table de cockpit, Annexe.

Equipement intérieur:
Ballon d'eau chaude, Prises interieures 12v, Prises interieures
220v.

Divers:
Haut-parleurs, Hi-Fi.

Equipement voiles:
Enrouleur de foc, Lazy Jack, Ridoir de pataras, barre d'écoute,
halebas.

Equipement de confort:

Cuisine, Cuisinière.

Sellerie et tauds:
sellerie de cockpit, Housse de bateau.

Notes équipement:
quelques drisses, d'écoutes et nouveaux gréements
Garde en acier inoxydable à la proue
Perche SPI pour spinnaker

DE
Epoxidbehandlung Gusseisenkiel 7/23
Lichtmaschine 12V 6/24
Dieseltankreinigung 7/22
Großsegel 6/22, Genua 5/17
Boiler 11/2
Ruderlager 11/21
Kühlschrank 7/13
Kabinentapetezierug Bug- und Heckkabine
Liegebock

Teakdeck benoetigt Aufmerksamkeit

Fotodokumentation verfügbar

Schmidt & Partner
International Yachtbrokers s.r.l.

Piazzetta dell' Imbarcadere 11
I - 33050 Aprilia Marittima/Latisana (UD)
Tel.: +39 0431 53711

Navigation elektronische Instrumentation:
Radarantenne, Navtex Empfaenger.

Deck und technische Ausrüstung:
Anker (+ 80 m 10mm chain/Kette/catena),
Druckwasserpumpe, Cockpitdusche, Liegebock, Fender,
manuelle Bilgepumpe, Seewasserpumpe, Landanschluß,
elektrische Ankerwinde, Badeleiter, Cockpittisch, Beiboot.

Anlagen an Bord:
Warmwasserbereiter, 12V Steckdose, 220V Steckdose.

Unterhaltung:
Lautsprecher, Stereoanlage.

Rigg:
Rollfockanlage, Lazy Jack, Achterstagsspanner,
Grossschottraveller, Baumniederholer.

Küchen-und Haushaltsgeräte:
Pantry, Herd.

Polster und Persenninge:
Cockpitpolster, Bootabdeckung.

Hinweis-Zubehör:
einige Falls, Schilde und neue Takelage
Edelstahlschutz im Bug
Spi-Baum

ES
Tratamiento epoxi en lastre 23/7
alternador 12V 6/24
Limpieza del depósito diésel 22/7
Vela mayor 22/6, Génova 17/5
Caldera 11/2
Bujes de dirección 11/21
Frigorífico 13/7
Tapicería de repuesto en la cabina de proa y popa
Embalse
La baraja de teca necesita atención
Documentación fotográfica disponible

Schmidt & Socio
International Yachtbrokers s.r.l.

Piazzetta dell' Imbarcadere 11
I - 33050 Aprilia Marittima/Latisana (UD)
Tel.: +39 0431 53711

Instrumentación electrónica de navegación:
Antena de radar, Meteo fax.

Equipo técnico y de cubierta:
Ancla (+ 80 m 10mm chain/Kette/catena), Bomba de agua
dulce, Ducha externa, cuna de varada, Defensas, Bomba de
achique manual, Bomba de Agua de Mar, Toma de 220V para
el puerto, Molinete eléctrico, Escalera de baño, mesa de
bañera, Auxiliar.

Enseres domesticos de abodo:
Calentador, Tomas de 12v, Enchufes de 220v.

Entretenimiento:
Altavoces, Stereo.

Accesorios Velas:
Enrollador de foque, Lazy Jack, Tensor backstay, Caro de
escota de mayor, Contra.

Cocina y electrodomésticos:
Cocina, Fogón.

Tapicerías:
Cojinería bañera, Funda para barco.

Notas accesorios:
algunas drizas, escotas y aparejo nuevo
Guarda de acero inoxidable en la proa
Palo SPI de spinnaker

NL
Epoxybehandeling op ballast 7/23
dynamo 12V 6/24
Dieseltankreiniging 7/22
Grootzeil 6/22, Genua 5/17
Ketel 11/2
Stuurbussen 11/21
Koelkast 13/7
Vervanging van bekleding boeg en achtersteven
Reservoir
Teakdek heeft aandacht nodig
Fotodocumentatie beschikbaar

Schmidt & Partner
International Yachtbrokers s.r.l.

Piazzetta dell' Imbarcadere 11
I - 33050 Aprilia Marittima/Latisana (UD)
Tel.: +39 0431 53711

Elektronische navigatie-instrumenten:
Radar antenne, Navtex (weerschrijver).

Technische- en dekuitrusting:
Anker (+ 80 m 10mm chain/Kette/catena), Waterdruk systeem,
Buitendouche, Stalling bok, Stootwillen, Handmatige
bilgepomp, Zeewaterpomp, Walaansluiting 230V, Elektrische
ankerlier, Zwemtrap, Kuiptafel, Bijboot.

Huishoudelijke apparatuur aan boord:
Warmwater boiler, 12V Stopcontacten, 230V Stopcontacten.

Vermaak:
Luidsprekers, Stereo.

Accessoires Zeilen:

Rolfok systeem, Lazy-Jack systeem, Achterstagspanner, Grootshoort traveller, Giek neerhouder.

Keuken & Apparatuur:
Keuken, Fornuis.

Bekleding:
Kuipkussens, Boothoes.

Opmerkingen over accessoires:
Enkele vallen, schoten en nieuwe rigging
Roestvrijstalen bescherming in de boeg
SPI spinnakerstok

RU
Эпоксидная обработка балласта 23.07
генератор 12V 6/24
Чистка дизельного бака 22.07
Грот 22.06, Генуя 17.05
Котёл 11/2
Рулевые втулки 21.11
Холодильник 13.07
Замена обивки носовой и кормовой каюты
Водохранилище
Тиковая колода требует внимания
Доступна фотодокументация

Schmidt & Partner
International Yachtbrokers s.r.l.

Piazzetta dell' Imbarcadero 11
I - 33050 Aprilia Marittima/Latisana (UD)
Тел.: +39 0431 53711

Электронные навигационные приборы:
антенна РЛС, МетеоФакс.

Техническое оснащение и оснащение палубы:
Якорь (+ 80 m 10mm chain/Kette/catena), Автоклав,
внешняя душа, cradle, Отбойники, Ручной трюмный насос,
Насос для морской воды, Прямая розетка от причала,
Электрическая якорная лебедка, Трап ванной, соскрит
table, Тендер.

Бытовое оснащение на борту:
котлом, Внутренние розетки 12v, Внутренние розетки
220v.

Развлечения:
динамиков, Привет-Fi.

Аксессуары паруса:
Устройство кливер, Джек лениво, Backstay tensioner,
Mainsheet traveller, Ванг.

Кухня и бытовые приборы:
Кухня, плитой.

Обивка:
Кокпит подушки, Чехол для лодки.

Дополнительные примечания:
некоторые фалы, листы и новая такелажная конструкция
Нержавеющая стальная защита в носу
Спинакерный столб SPI

General information

Make:	Jeanneau
Model:	SUN MAGIC 44
Year:	1989
Condition:	Used

Engine

Engine:	Yanmar 4JH-TE, 55 hp
Engine type:	
Fuel type:	Diesel
Fuel tank:	220 ()

Measurements

Length:	13.33 m (43.73 ft)
Beam:	4.23 m (13.88 ft)
Deep:	2.12 m (6.96 ft)

Accommodation

Cabins:	0
Berths:	0

Images



_DSC1434



26



14



7



1



3



4



5



6



8



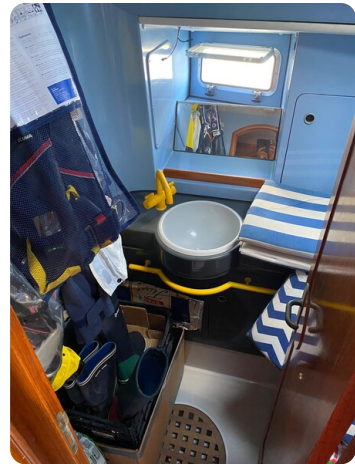
9



10



11



12



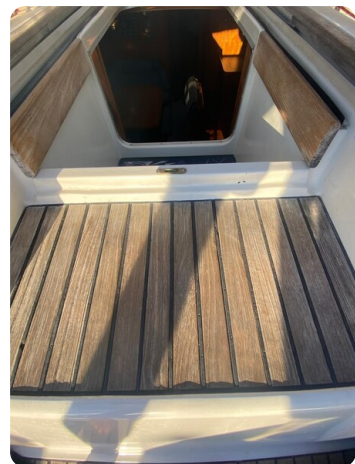
15



16



17



18



19



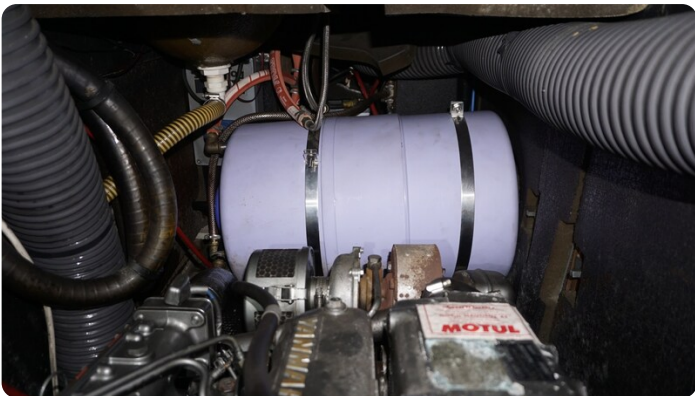
20



22



WhatsApp Image 2026-02-21 at 10.48.27



_DSC1482



20251004_131939

Michael Schmidt & Partner Yachthandels GmbH

Rübekamp 5
25421 Pinneberg
Germany

Phone: +49 4101 5155566

<https://www.msp-yacht.de>



Michael Schmidt & Partner
International Yachtbrokers