



Jeanneau Merry Fisher 895 Sport

£154,995 • Brightlingsea United Kingdom (UK) • New • 2025

Presented by

Peter Marchant
Phone: 44(0)1206302003

Morgan Marine

The Boatyard, Shipyard
Estate
CO7 0AR Colchester
United Kingdom (UK)



Details

| | |
|--------------|------------------------|
| Make: | Jeanneau |
| Model: | Merry Fisher 895 Sport |
| Year: | 2025 |
| Condition: | New |
| Engine: | , 660 hp |
| Engine type: | |
| Fuel type: | Gasoline |
| Length: | 8.92 m (29.27 ft) |
| Beam: | 2.99 m (9.81 ft) |
| Cabins: | 0 |
| Berths: | 0 |



Morgan Marine



7zea.com

Description

EN

2025 Jeanneau Merry Fisher 895 Sport with twin Suzuki DF175 APX - Drive By Wire, bow thruster and trim tabs for great manoeuvrability and a smooth ride. A saving of over £26,000 from the RRP. This boat is well appointed with over £30,000 extras - Trim Level Premiere, upgraded electronics, folding side benches + cockpit table, bow cushions and more. CE category C for 10. Delivered to Morgan Marine with full PDI / commissioning / installation and hand over package + prepared and antifouled. 2025 model Jeanneau Merry Fisher 895 Sport is in stock at Morgan Marine and available for viewing 7 days a week. NB - library photos may not reflect specification of boat.

Deck: Electric windlass (with control from helm), self draining anchor locker and bow roller + anchor and chain. Self draining cockpit. 2x forward chocks + 2x forward + 2x middle + 2x aft mooring cleats. Open pulpits + cockpit side rails + cockpit aft rails. Mooring kit (fenders and ropes). Luxury folding aft cockpit bench with cushions + folding port and starboard benches + wood table. Deck locker with ladder. Swim platforms with folding boarding ladder and cockpit barriers. Fishing rod holders. Fish cutting table. Storage rack on the roof for Stand Up Paddle board. Cushions in front cockpit.

Cabin: Forward cabin with 2x single berths, shelves, wardrobe, hull + deck windows, opening porthole and hatch to deck. Aft cabin with double berth, lockers, opening porthole and hull + deck windows. Toilet compartment with marine toilet (80L holding tank), opening porthole, washbasin (pressurised hot water) and shower. Curtains for wheelhouse and cabins.

Cockpit: Wheelhouse with aft sliding door, port side window, inverted windscreen (the top is further forward than the bottom) - with port and starboard windscreen wipers + screen wash, manual sliding roof hatch and starboard side door. Starboard side helm position with full engine controls, electronics, compass and bolster seat. Co-pilot bench - converts to seating at saloon table. Port side saloon with table, storage nets and aft cushioned bench seat (lockers under). Starboard side galley with sink (pressurised hot water), 60L fridge (12v) and gas stove.

Electronics: Upgraded Garmin Electronic Pack: Garmin GPSmap 1223xsv chartplotter and GT15M-IH transducer + display of engine information on Garmin screen. Garmin VHF 215i + AIS. 220v shore power fitting + charger. Electric water heater. LED lights in wheelhouse and cabin + cockpit floor. Navigation lights.

Machinery: Twin Suzuki DF175 APX - Drive By Wire. Bow thruster. Lenco electric trim tabs. Hydraulic steering. Manual and electric bilge pumps. Volcano engine lock. Fuel capacity: 2x 300L (with outside fill). Water capacity: 100L.

General information

| | |
|------------|------------------------|
| Make: | Jeanneau |
| Model: | Merry Fisher 895 Sport |
| Year: | 2025 |
| Condition: | New |

Engine

| | |
|--------------|----------|
| Engine: | , 660 hp |
| Engine type: | |
| Fuel type: | Gasoline |

Measurements

| | |
|---------|-------------------|
| Length: | 8.92 m (29.27 ft) |
| Beam: | 2.99 m (9.81 ft) |
| Deep: | 0.62 m (2.03 ft) |
| Weight: | 0 () |

Accommodation

| | |
|---------|---|
| Cabins: | 0 |
| Berths: | 0 |

Images



Jeanneau Merry Fisher 895 Sport



Jeanneau Merry Fisher 895 Sport - planing on the water



Jeanneau Merry Fisher 895 Sport - great for water-sports and fun on the water



Jeanneau Merry Fisher 895 Sport - bow sun lounger area



Jeanneau Merry Fisher 895 Sport - render of aft cockpit



Jeanneau Merry Fisher 895 Sport - overhead view



Jeanneau Merry Fisher 895 Sport - side deck towards bow



Jeanneau Merry Fisher 895 Sport - layout diagram of starboard side



Jeanneau Merry Fisher 895 Sport - entrance to forward cabin



Jeanneau Merry Fisher 895 Sport - wheelhouse with port side seating + table and starboard side helm position



Jeanneau Merry Fisher 895 Sport - forward cabin with hatch to deck



Jeanneau Merry Fisher 895 Sport - aft cabin



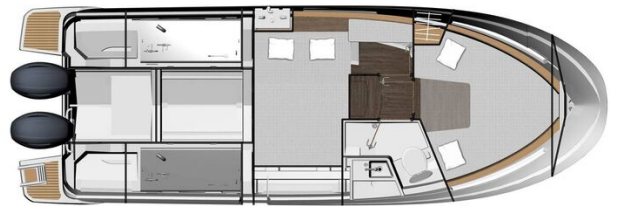
Jeanneau Merry Fisher 895 Sport - wheelhouse saloon seating with berth infill



Jeanneau Merry Fisher 895 Sport - toilet compartment



Jeanneau Merry Fisher 895 Sport - helm position and side door



Jeanneau Merry Fisher 895 Sport - layout diagram of cabins



Jeanneau Merry Fisher 895 Sport - layout diagram of deck and wheelhouse interior



Jeanneau Merry Fisher 895 Sport - co-pilot bench



Jeanneau Merry Fisher 895 Sport

Morgan Marine

The Boatyard, Shipyard Estate
CO7 0AR Colchester
United Kingdom (UK)

Phone: 44(0)1206302003

<https://morganmarine.com>

