



Highfield Ocean Master 500

£28,995 • Brightlingsea Royaume-Uni • Usagé • 2019

Présenté par

Peter Marchant
Phone: 44(0)1206302003

Morgan Marine

The Boatyard, Shipyard
Estate
CO7 0AR Colchester
Royaume-Uni

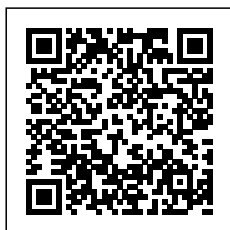


Détails

Fabricant:	Highfield
Modèle:	Ocean Master 500
An:	2019
Condition:	Usagé
Moteur:	, 435 hp
Type de moteur:	
Longueur:	5 m (16.40 ft)
Largeur:	2.28 m (7.48 ft)
Cabines:	0
Couchettes:	0



Morgan Marine



7zea.com

La description

EN

Highfield Ocean Master 500 Aluminium hulled with Honda BF100 XRTU outboard and console plus plenty of seating. The Ocean Master range has been engineered to be the toughest, most capable and seaworthy RIB on the market today - designed for UK waters and built to last. With the tough, non-porous qualities of the aluminium hull there's no need to worry about getting gelcoat chips, or putting the boat on a beach or a trailer. With a SBS trailer and full overall boat cover this boat is ready to hit the water. Perfect for Morgan Marines park and ride service.

Deck: Black PVC tubes - diameter: 52cm. Air chambers: 6. Non-slip, self-draining deck. 4mm thick powder coated marine grade aluminium hull. Flush mount non-return valves. Bow step with mooring cleats and roller. Boarding ladder. Heavy duty rubbing strake. Bow locker with seat cushion. Lifting points and towing eyes. A-frame. Full overall boat cover. Maximum people: 10.

Cabin: N/A

Cockpit: Stand up console with twin single jockey seats with backrests and storage underneath. Stern backseat with storage. Forward facing console seat with storage. Dash with engines controls.

Electronics: Garmin chartplotter. Garmin VHF Radio. Fusion MS-RA55 audio system with speakers. Navigation lights. Bilge pump. Honda RPM/ Rev / trim-tilt gauges.

Machinery: Honda BF100 XRTU Outboard with power trim and tilt. Fuel capacity 90 Litres.

Trailer: SBS 750Kg unbraked roller road trailer with jockey wheel and winch.

Informations générales

Fabricant:	Highfield
Modèle:	Ocean Master 500
An:	2019
Condition:	Usagé

Moteur

Moteur:	, 435 hp
Type de moteur:	

Des mesures

Longueur:	5 m (16.40 ft)
Largeur:	2.28 m (7.48 ft)
Profond:	0 m (0.00 ft)
Poids:	0 ()

Hébergement

Cabines:	0
Couchettes:	0



Highfield-OM500-main02



Highfield-OM500-bow-seating



Highfield-OM500-top2



Highfield-OM500-side-5



Highfield-OM500-top-view



Highfield-OM500-back-2



Highfield-OM500-bow-roller



Highfield-OM500-fron-view



Highfield-OM500-back



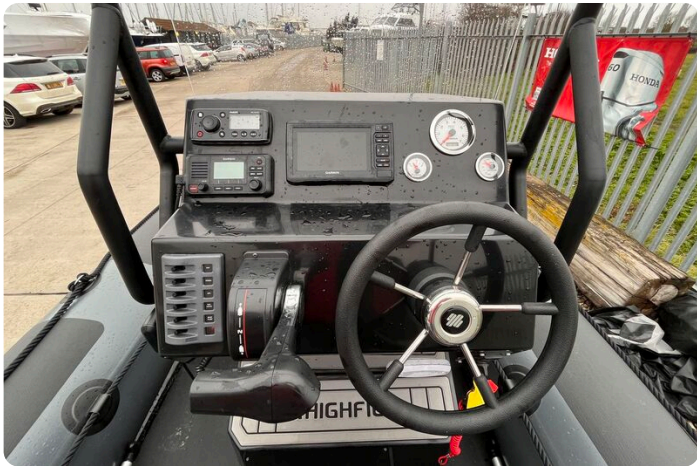
Highfield-OM500-engine



Highfield-OM500-a-frame



Highfield-OM500-side-3



Highfield-OM500-wheel-2



Highfield-OM500-plotter



Highfield-OM500-controls



Highfield-OM500-dash



Highfield-OM500-jockeys



Highfield-OM500-bench



Highfield-OM500-bow-seat



Highfield-OM500-jockey-seat



Highfield-OM500-cover



Highfield-OM500-side-2



Highfield-OM500-bow-cushion



Highfield-OM500-Side

Morgan Marine

The Boatyard, Shipyard Estate
CO7 0AR Colchester
Royaume-Uni

Téléphone: 44(0)1206302003

<https://morganmarine.com>

