



# E.G. VAN DE STADT STORMY 55

€120,000 • TARRAGONA Spain • Used • 1981

## Presented by

Olivier Haroche  
Phone: +34 637 510 716

**Barcelona Yachting**  
Port Olimpic - Local 14  
08005 Barcelona  
Spain

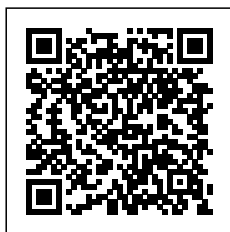


## Details

Make:	E.G. VAN DE STADT
Model:	STORMY 55
Year:	1981
Condition:	Used
Engine:	YANMAR 4JH4-HTE, 115 hp
Engine type:	
Fuel type:	Diesel
Length:	16.85 m (55.28 ft)
Beam:	4.2 m (13.78 ft)
Cabins:	0
Berths:	0



Barcelona  
Yachting



7zea.com

# Description

FR  
**Voilier classique E.G. VAN DE STAD STORMY 55 de 1981. Pavillon Espagnol, prix TTC**

Coque sandwich/aluminium, 2 réservoirs d'eau communiquant par dépression pour servir de ballast. Chauffe eau électrique + chauffe eau gaz qui sert de chauffage. Gréement dormant changé il y a 6 ans. Moteur neuf en 2017. Amarre disponible, 5000 euros/an

Visite sur RDV

Dossier PDF sur demande

Video int : <https://youtu.be/tKkRgYpdvSA>

Video ext : <https://youtu.be/aSXjoU9NRQw>

EN  
Classic sailboat E.G. VAN DE STAD STORMY 55 - 1981. Spanish flag, price including VAT

Sandwich/aluminium hull, 2 water tanks communicating by depression to serve as ballast. Electric water heater + gas water heater which serves as heating. Standing rigging changed 6 years ago. New engine in 2017. Mooring available, 5000 euros/year

Visit by appointment

PDF file on request

Video int : <https://youtu.be/tKkRgYpdvSA>

Video ext : <https://youtu.be/aSXjoU9NRQw>

ES  
Velero clásico E.G.VAN DE STAD STORMY 55 de 1981. Bandera española, precio con IVA incluido

Casco sandwich/aluminio, 2 depósitos de agua comunicados por depresión para servir de lastre. Termo eléctrico + termo de gas que sirve de calefacción. Jarcia fija cambiada hace 6 años. Motor nuevo en 2017. Amarre disponible, 5000 euros/año

Visita previa cita

Archivo PDF a petición

Video int : <https://youtu.be/tKkRgYpdvSA>

Video ext : <https://youtu.be/aSXjoU9NRQw>

## General information

Make:	E.G. VAN DE STADT
Model:	STORMY 55
Year:	1981
Condition:	Used

## Engine

Engine:	YANMAR 4JH4-HTE, 115 hp
Engine type:	
Fuel type:	Diesel

## Measurements

Length:	16.85 m (55.28 ft)
Beam:	4.2 m (13.78 ft)
Deep:	2.7 m (8.86 ft)
Weight:	0 kg (0.00 lb)

## Accommodation

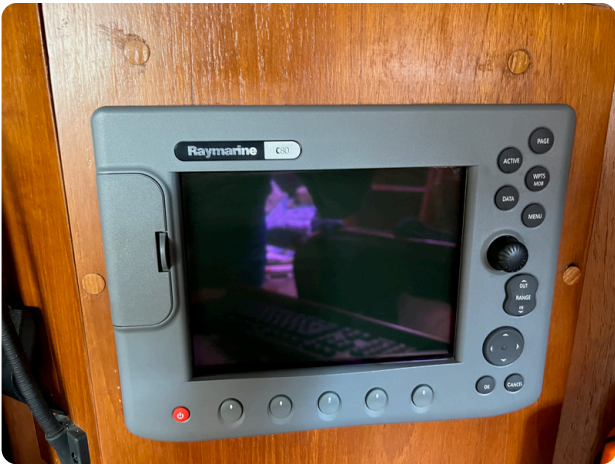
Cabins:	0
Berths:	0

# Images





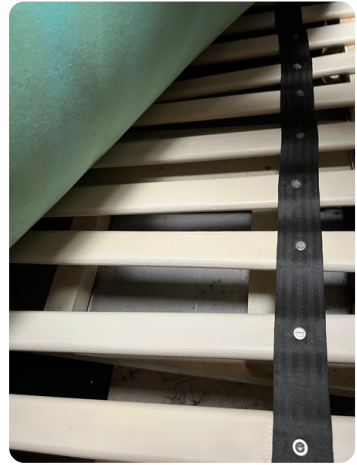






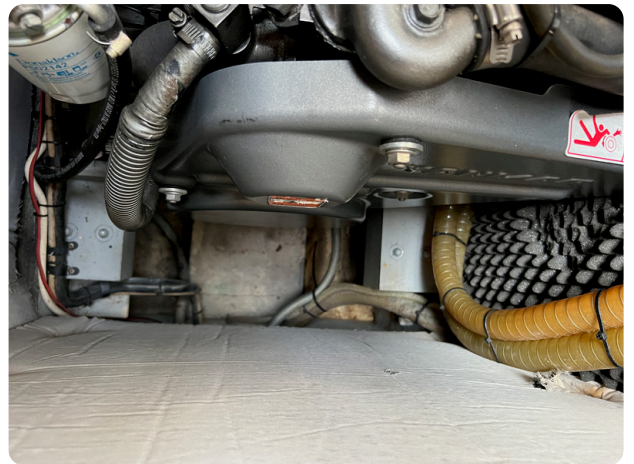


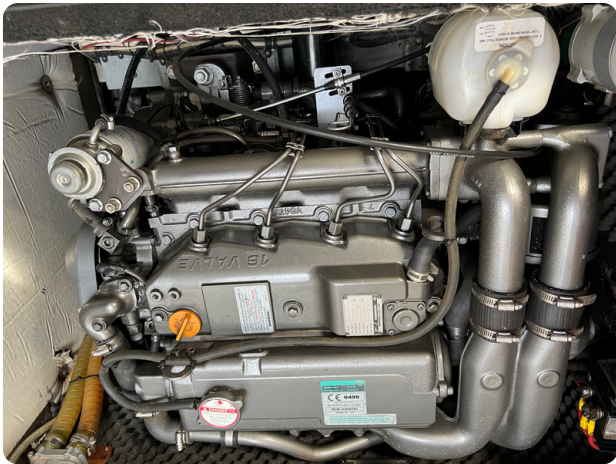


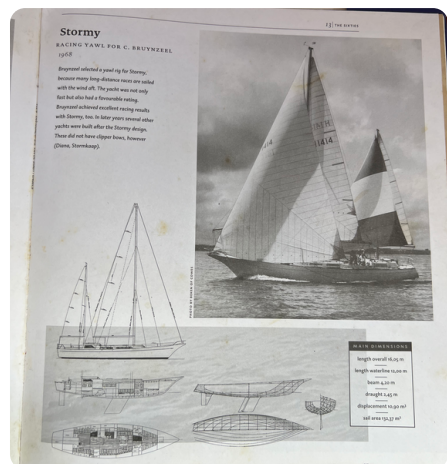


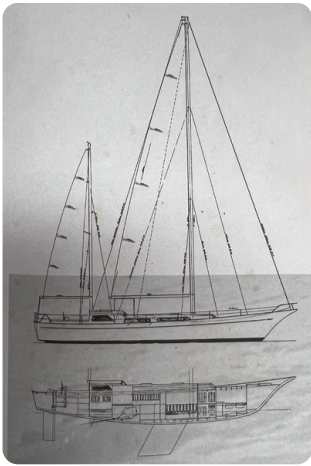












**Barcelona Yachting**

Port Olímpic - Local 14

08005 Barcelona

Spain

Phone: +34 637 510 716

<https://www.barcelonayachting.com/>

