



# Cranchi Mediterrannée 50

€199,000 • Wanssum Pays-Bas • Usagé • 2003

## Présenté par

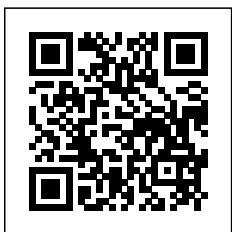
Bram de Groot  
Phone: 0031(0)478450015

**GrandYachts BV**  
Geijsterseweg 10  
5861 BL Wanssum  
Pays-Bas

**GRANDYACHTS®**

## Détails

Fabricant:	Cranchi
Modèle:	Mediterrannée 50
An:	2003
Condition:	Usagé
Coque:	Fibre de verre
Moteur:	Volvo Penta D12-715 EVC 2003
Type de moteur:	Moteur inboard
Type de carburant:	Diesel
Réservoir de carburant:	1950 l (515.14 gal)
Longueur:	15.32 m (50.26 ft)
Largeur:	4.33 m (14.21 ft)
Cabines:	0
Couchettes:	3
Réservoir d'eau:	500 l (132.09 gal)



GrandYachts BV



7zea.com

# La description

---

**Boat location: GrandYachts - Wanssum, The Netherlands**

**VAT-paid**

**81 pictures on our website [grandyachts.eu](http://grandyachts.eu) and in high resolution upon request.**

Cranchi's are known for their ruggedness and redundancy. Their hulls are solid fiberglass throughout; no coring or other materials are used. Cranchi laminated Kevlar reinforcement in critical areas. The hull and deck use monocoque construction, a technique that's more common to aircraft. All of the rigidity is in the outer shell. The result is a strong and quiet boat.

This **Cranchi 50 Mediterranean** is in a good condition and fitted with all options like

Bow and stern thruster, generator, air conditioning / heating, garage, ice-maker, large sun pads etc.

And of course this example is fitted with the highly sought-after D12-715 Volvo Penta engines.

Viewing of this VAT-paid fresh-water boat is highly recommended!

The 50 Mediterranean is an Italian cruiser with all the comforts and amenities you would

expect on a 60 + foot yacht. The design of this Italian vessel is a breath of fresh air. Most

state side built boats in the same range I find bulky or outdated. And most look the same

and don't have a character that is all their own. Not only does the Mediterranean' 50 have

sleek sexy lines and eye catching performance; it also delivers everything you could possibly

need in an extended range cruiser. There are so many thoughtful and innovative features

## Power

This boat is so well laid out that it is perfect for a large family that wants a comfortable and

fast cruiser to take them out to their favorite destinations and back over the course of the

There is also great access to the rudderposts and steering hydraulics through the opening in the floor of the garagedeck all the way aft. This provides great ventilation and comfort when working below. The use of sound deadening materials is evident in the quiet ride experienced when at speeds.

Measured is a steady 77 on the dBa meter for most of the range and got the highest reading

of 83 at full throttle. The other contributing factor to the smooth ride and great performance

is the well-designed hull. The hull of the Mediterranean' 50 sports a deep-V in the bow with

hard chines that cut down on spray. Further aft there are flat sections that help to stabilize

the ride while the propellers are also housed in prop tunnels. All of this factors in for a

uniquely smooth and stabile vessel that can take plenty of seas while still providing you with

the best that luxury has to offer.

## Topside Layout

The layout on deck is open and practical. A simplistic nature of European design and this

boat speaks style and functionality. Back aft we find a large swim platform that makes

getting onboard from the dock or tender easy. The boat also features a hydraulic gangway,

which features one button operation and is lighted for nighttime use. And when it comes to

docking the Mediterranean' 50 convenient features such as stern winches and a unique helm

design allow the driver to quickly tend to lines when docking. This boat might be large but

with all of the great features like the double remotes for both bow and stern thrusters it's a breeze to handle with two people. Located further aft is the garage where you can store a large inflatable or jet boat. It features convenient rollers and an electric winch to help retrieve the boat built into the bulkhead. The top of the garage also pulls double duty as a large sun pad for lounging.

## Wet bar

To port in the cockpit is a wet bar and electric grill. There is also a fridge, ice-maker and storage rack located just underneath the wet bar.

## Seating and Helm

Over to starboard is a C-shaped seating arrangement and table, which comfortably seat six or seven adults. Forward of this area is the helm which is set up to accommodate four people. This is great for keeping everyone together and in the action while underway. To port there is a seat, which accommodates two. You will also find cup holders and plenty of dashboard storage. Over to starboard the two helm chairs are comfortable and are electronically controlled for the best possible line of site. They also feature a flip up bolster to make it comfortable when standing. Another great feature is the step

that is located behind these two seats that when separated provides a quick way to get out on the side decks to tend lines when docking. The helm is well designed with good space for mounting additional gear.

The Volvo controls are smooth, and the custom wood and leather Nardi steering wheel add a nice touch. The walkway up to the bow is wide and makes for easy passage. The railings are large stainless steel and provide great support. Also, the windshield features a wide large cap on top, which acts as a railing when moving forward. Up here there's another large sun pad and wide open deck. You will also find a large anchor locker, windlass, fender storage and heavy-duty hardware throughout.

### Below Deck

An aluminum sliding door provides the entrance to the cabin. Once below beautifully crafted

American cherry cabinets and Alcantara wall panels surround you. The door handles are covered in leather and the layout for the three staterooms and two heads creates a wide-open feel. As you enter the cabin you will find the two staterooms to port and starboard, one with two twins and the other with a full. Each provides plenty of storage and have large hanging lockers. Attached to the cabin and the port stateroom is the day-head which features an electric toilet and loads of cabinet space. One of the neat little features is the showerhead, which is built into the ceiling providing great coverage.

### Galley

The galley is just to starboard and features loads of storage, Corian countertops and provides

access to the ship's electrical panel. Over to port is a U-shaped settee, which will seat five to

six for meals, with the additional bench stools that are provided.

For your comfort there's a combi unit that features grill, oven and microwave. A pocket sized dishwasher is nicely recessed into the galley as well.

### Master Stateroom

Just forward is the master stateroom with a double queen-sized bed and private head with

are two large hanging lockers with shelves, two portholes for fresh air, and a stereo player for relaxation.

### Performance and Handling

The Volvo engines provided smooth acceleration and excellent performance. This is truly a

great go anywhere cruiser for the family. It can also be a great-extended cruiser for smaller

couples, and affords plenty of storage for all of your gear and toys. The hull provided a solid ride and with the unique hull design you're sure to feel safe and secure when traveling in

### Cockpit and helm position:

- Self-draining cockpit
- GRP reclining radar arch
- Locker for mooring lines
- C shaped dinette
- storage locker
- Glass holder
- Object holder
- Table with glass holder
- Teak-laid steps for access to side deck
- Side deck lighting
- Wet-bar with icemaker, 42 lt. 24/230 V refrigerator, sink and waste bin
- Cooking grate
- Teak-laid swimming platform and cockpit floor
- Foldaway swimming ladder with handle
- Shower with mixer
- Garage for water scooter or inflatable (max. mt 3,50) with servoassisted opening under sunbed
- 32 Amp./230 v. Shore power socket with shore power cable

### Interior finish:

- Furniture in male-oak and wengé wood
- Glossy laquer
- Galley and toilet Corian® worktops
- Fabrics: cotton, silk, Alcantara®
- Saloon teak laid floor
- Electric winder for shore power cable
- Pressure reducer
- Lighting
- Hood housing on radar arch
- Telescopic hydraulic passerelle with one touch in/out and remote control
- Cockpit lighting when operating the hydraulic passerelle
- Servo-assisted inspection hatches for engines, stern compartment
- Copilots handle
- Boathook
- Access door to cockpit
- Rolling rubber hose
- Small rubber hose to wash engine room
- First aid kit
- Stern fender holder with fenders
- 2 stern winches with warping bell and courtesy light
- Helm position: Dual color dashboard aluminium and grey
- Pilot area with 2 seats, one with electric height and forward/backward adjustment, and one with electric side adjustment, both with double driving position
- Double copilot seat
- Volvo Penta electronic single levers engine control
- Radio control panel
- Complete engine instruments: oil pressure and water temperature gauges, voltmeters and hourcounter
- Engine warning lights and acoustic alarm
- Chain meter counter
- Wood and leather wheel height adjustable
- Ritchie magnetic compass
- Hydraulic steering/power steering
- Rudder-angle indicator
- Fuel level gauge
- Tridata Echo-logtemp. (Echosounder + total and trip mile-counter)
- Autopilot
- GPS / Chartplotter (colour)
- VHF DSC
- Horn and wiper switches
- Navigation lights switch
- Anchor windlass control

- Hydraulic trim tab control
- Bilge pump controls
- Chart table and object holder
- 12V Cellular phone socket with housing for phone
- Bow thruster control
- Removable bow extension Foredeck locker for mooring lines
- Teak on foredeck
- 1.200 W electric anchor windlass with remote control and winch for retrieving lines and warping bell
- Chain-washing pump
- 20 kg. Bruce anchor
- 50m chain mm 10
- 2 AISI 316 s. steel foredeck line guides and 2 aluminium on stern
- 2 bow, 4 spring and 4 stern AISI 316 s. steel cleats
- Crystal windshield with s. steel frame
- 2 electric windshield wipers, with speed regulator and washers
- Bow thruster kw 5
- S. steel pulpit with front opening, and s. steel filiere
- Bow fender holder with 4 fenders
- Deck s. steel safety lines and railing
- S. steel rubbing band
- Directional searchlight
- Horn
- Double s. steel fuel filler cap
- Double fuel tank air vent with anti-flame and anti-spray net
- S. steel water filler cap
- Water tank air vent
- S. steel port and starboard discharge suppers
- Navigation lights
- Bow and stern U hooks
- Hydraulic trim tabs with 2 cylinder each flap
- Moulded non-slip deck
- N. 4 mooring lines
- Hood with bimini top
- Cockpit cover
- Owners manual

- Sliding cabin access door
- Lighting on cabin access stair
- Leather dinette divan
- Removable wood table, adjustable
- 2 dinette stools under table
- Galley corner including: pyroceram stove top, s. steel sink with mixer, Corian® counter-top, microwave and grill oven, 120 l. refrigerator with 24/230 Volt current reverser
- Set of crockery, cutlery and glasses
- 2 waste bins
- Galley mahogany
- Laid floor
- Cupboards and cabinets for stowing crockery
- Fire extinguisher
- Bar cabinet
- Cabinet for TV (extra)
- TV wiring and antenna pre arrangement
- Radio stereo/CD with amplifier, sub woofer saloon and cockpit loudspeakers, dashboard control and infra-red remote control
- Clock
- Barometer
- Hygrometer
- 230V power sockets
- Electric panel with magnetothermal protections
- 2 s. steel portholes with mosquito net
- 2 hatches with blind and mosquito net
- Lighting with light intensity control

- 5 Kw bow thruster
- 7,7 Kva generator
- Cockpit ice-maker refrigerator and cooking grate
- Telescopic hydraulic passerelle
- Cockpit lighting when operating the passerelle
- Chain meters counter
- Pilot area with two seats with electric adjustment, one height and back/forward and one with side adjustment
- G.P.S. + Chartplotter + (colour)
- Autopilot
- V.H.F. DSC
- Anchor winch remote control
- Tridata echo/speedlog/temp.
- Rudder angle indicator
- Searchlight
- Hood with bimini top
- Cockpit cover
- Bow sunbathing cushion
- Platform, and cockpit teak-laid
- Teak on foredeck
- Vacuum flush WC
- N. 4 mooring lines
- Radio cassette/CD in saloon with helm position control panel
- Radio subwoofer in the cockpit
- N. 3 radio stereo/CD in the 3 cabins
- TV antenna and wiring
- Teak laid saloon floor
- Cranchi® set of crockery, cutlery and glasses (6 pp)
- Saucepan set
- First aid kit
- Safe in master cabin
- N. 1 manual fire extinguishers in the cabin, n. 1 in the cockpit
- N. 3 automatic fire extinguishers in engine room
- Shore power cable with electric winder
- Buckskin/sponge/bucket
- N. 2 stern winches with warping bells and line guides and courtesy light
- Cockpit and sidewalk lighting

#### Disclaimer

GrandYachts offers the details of this vessel in good faith but cannot guarantee or warrant the accuracy of this information nor warrant the condition of the vessel. A buyer should instruct his agents, or his surveyors, to investigate such details as the buyer desires validated. This vessel is offered subject to prior sale, price change, or withdrawal without notice.

#### Disclaimer

GrandYachts offers the details of this vessel in good faith but cannot guarantee or warrant the accuracy of this information nor warrant the condition of the vessel. A buyer should instruct his agents, or his surveyors, to investigate such details as the buyer desires validated. This vessel is offered subject to prior sale, price change, or withdrawal without notice.

## Informations générales

Fabricant:	Cranchi
Modèle:	Mediterranée 50
An:	2003
Condition:	Usagé
Coque:	Fibre de verre

## Moteur

Moteur:	Volvo Penta D12-715 EVC 2003
Type de moteur:	Moteur inboard
Type de carburant:	Diesel
Réservoir de carburant:	1950 l (515.14 gal)

## Des mesures

Longueur:	15.32 m (50.26 ft)
Largeur:	4.33 m (14.21 ft)
Profond:	0 m (0.00 ft)

## Hébergement

Cabines:	0
Couchettes:	3
Réservoir d'eau:	500 l (132.09 gal)
Réservoir d'eaux usées:	150 l (39.63 gal)

## Images



Cranchi Mediterranée 50



Cranchi Mediterranée 50





Cranchi Mediterranée 50



Cranchi Mediterranée 50



Cranchi Mediterranée 50



Cranchi Mediterranée 50



Cranchi Mediterranée 50



Cranchi Mediterranée 50





Cranchi Méditerranée 50



Cranchi Méditerranée 50



Cranchi Méditerranée 50



Cranchi Méditerranée 50



Cranchi Méditerranée 50



Cranchi Méditerranée 50





Cranchi Mediterranée 50



Cranchi Mediterranée 50



Cranchi Mediterranée 50



Cranchi Mediterranée 50



Cranchi Mediterranée 50



Cranchi Mediterranée 50





Cranchi Mediterranée 50



Cranchi Mediterranée 50



Cranchi Mediterranée 50



Cranchi Mediterranée 50



Cranchi Mediterranée 50



Cranchi Mediterranée 50





Cranchi Mediterrannée 50



Cranchi Mediterrannée 50



Cranchi Mediterrannée 50



Cranchi Mediterrannée 50



Cranchi Mediterrannée 50



Cranchi Mediterrannée 50





Cranchi Mediterranée 50



Cranchi Mediterranée 50



Cranchi Mediterranée 50



Cranchi Mediterranée 50



Cranchi Mediterranée 50



Cranchi Mediterranée 50



Cranchi Mediterranée 50



Cranchi Mediterranée 50



Cranchi Mediterranée 50



Cranchi Mediterranée 50



Cranchi Mediterranée 50



Cranchi Mediterranée 50





Cranchi Mediterranée 50



Cranchi Mediterranée 50



Cranchi Mediterranée 50



Cranchi Mediterranée 50



Cranchi Mediterranée 50



Cranchi Mediterranée 50



Cranchi Mediterranée 50



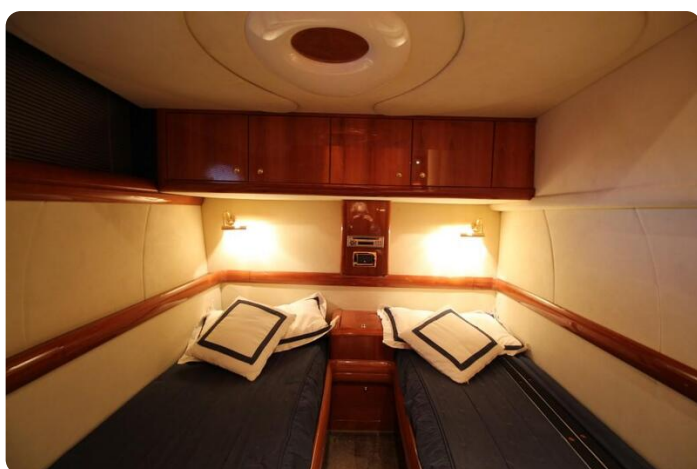
Cranchi Mediterranée 50



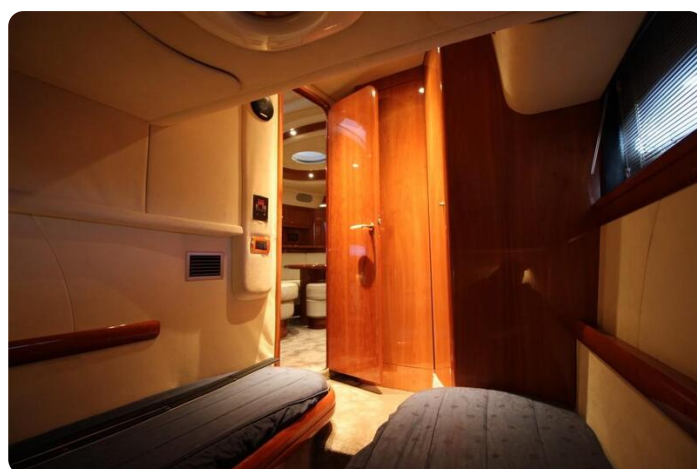
Cranchi Mediterranée 50



Cranchi Mediterranée 50



Cranchi Mediterranée 50



Cranchi Mediterranée 50





Cranchi Mediterranée 50



Cranchi Mediterranée 50



Cranchi Mediterranée 50



Cranchi Mediterranée 50



Cranchi Mediterranée 50



Cranchi Mediterranée 50



Cranchi Mediterranée 50



Cranchi Mediterranée 50



Cranchi Mediterranée 50



Cranchi Mediterranée 50



Cranchi Mediterranée 50

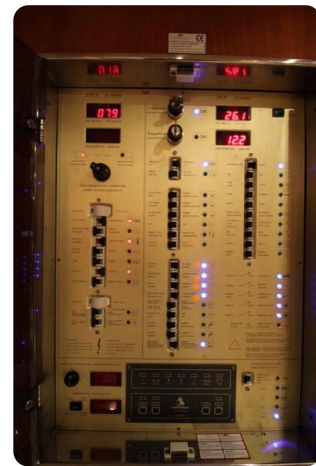


Cranchi Mediterranée 50





Cranchi Mediterranée 50



Cranchi Mediterranée 50



Cranchi Mediterranée 50



Cranchi Mediterranée 50



Cranchi Mediterranée 50



Cranchi Mediterranée 50



Cranchi Mediterranée 50



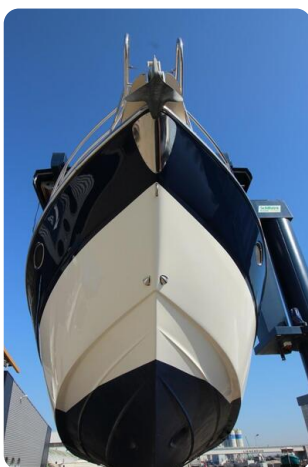
Cranchi Mediterranée 50



Cranchi Mediterranée 50



Cranchi Mediterranée 50



Cranchi Mediterranée 50



Cranchi Mediterranée 50





Cranchi Mediterranée 50

**GrandYachts BV**

Geijsterseweg 10

5861 BL Wanssum

Pays-Bas

Téléphone: 0031(0)478450015

<https://grandyachts.eu>



**GRANDYACHTS®**