



Cranchi Atlantique 50

€319,000 • Wanssum Netherlands • Used • 2008

Presented by

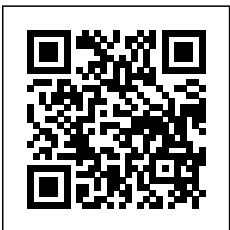
Bram de Groot
Phone: 0031(0)478450015

GrandYachts BV
Geijsterseweg 10
5861 BL Wanssum
Netherlands

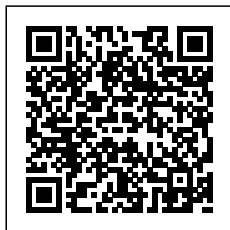
GRANDYACHTS®

Details

Make:	Cranchi
Model:	Atlantique 50
Year:	2008
Condition:	Used
Hull:	Fiberglass
Engine:	Volvo Penta D9-575 EVC 2008
Engine type:	Inboard engine
Fuel type:	Diesel
Fuel tank:	1521.74 l (402.00 gal)
Length:	15.54 m (50.98 ft)
Beam:	4.33 m (14.21 ft)
Cabins:	0
Berths:	4
Watertank:	560.24 l (148.00 gal)



GrandYachts BV



7zea.com

Description

Boat location: Wanssum, The Netherlands, inside GrandYachts showroom (dry)

VAT-paid

101 pictures on our website grandyachts.eu and in high resolution upon request.

This is a proper 1st owner Cranchi 50 Atlantique (2008) – Immaculate Condition, Only 436 Engine Hours!

Discover the perfect blend of Italian craftsmanship, luxury, and performance with this stunning Cranchi 50 Atlantique from 2008. With only 436 engine hours, this yacht has been meticulously maintained and is in exceptional condition. Whether for long cruises or weekend getaways, the Cranchi 50 Atlantique delivers comfort, power, and elegance.

Specifications:

- Length Overall (LOA): 15.54m (49.2 ft)
- Beam: 4.33m (14.2 ft)
- Draft: 1.30m (4.3 ft)
- Displacement: 16,500 kg
- Hull Material: GRP (Fiberglass)
- Fuel Capacity: 1,520 liters
- Water Capacity: 560 liters
- Engines: 2 x Volvo Penta D9-575 (575 HP each)
- Engine Hours: Only 436
- Top Speed: Approx. 30 knots
- Cruising Speed: Approx. 24 knots
- Propulsion: Shaft drive

Exterior Features:

- Flybridge with Full Helm Station – Offers exceptional visibility and seating for guests
- Teak-Laid Cockpit and Swim Platform – Elegant and durable finishing
- Hydraulic Passerelle – For easy boarding and tender handling
- Electric Windlass – Effortless anchoring
- Spacious Sunpads on Foredeck – Perfect for relaxation
- Large Cockpit Area with Seating & Table – Ideal for entertaining guests

- Swim Ladder & Transom Shower – Convenient access to the water

Interior Features:

- 3 Luxurious Cabins & 2 Heads – Master stateroom (ensuite), VIP cabin, and twin guest cabin
- Salon with U-Shaped Seating & Dining Table – Comfortable space with panoramic windows
- Fully Equipped Galley – Includes fridge/freezer, microwave, ceramic cooktop, and ample storage
- Premium Finishes – High-quality woodwork, leather upholstery, and LED lighting
- Air Conditioning & Heating – Ensuring year-round comfort

Navigation & Electronics:

- Raymarine GPS/Chartplotter – Advanced navigation assistance
- Raymarine Autopilot – For ease of cruising
- Radar & Depth Sounder – Essential for safe voyages
- VHF Radio – Reliable communication at sea
- Bow Thruster – Enhanced maneuverability in tight marinas
- Trim Tabs – For optimal performance and fuel efficiency

Additional Features:

- Generator – Ensures power supply at anchor
- Shore Power Connection – With battery charger
- Electric Toilets – With holding tank
- Fusion Sound System – Premium onboard entertainment
- Full Set of Covers & Bimini Top – Protection from sun and weather

This Cranchi 50 Atlantique is a rare opportunity for anyone seeking a luxury flybridge yacht in pristine condition with low engine hours. Whether you're an experienced yachtsman or upgrading to a larger vessel, this yacht delivers an exceptional boating experience.

For more information or to schedule a viewing, contact us today!

Italian styling is admired for being trend setting and innovative. When it comes to complex mechanical things such as a boat, however, style is incomplete when it doesn't come with substance. Fortunately, both are in ample supply on our Cranchi Atlantique 50. The model from one of Italy's oldest builders performs as well as it looks.

But the real beauty of the Atlantique 50 is beneath the skin. It's in the systems, behind the access panels and running throughout the boat.

Cranchis are known for their ruggedness and redundancy. Their hulls are solid fiberglass throughout; no coring or other materials are used. Cranchi laminated Kevlar reinforcement in critical areas. The hull and deck use monocoque construction, a technique that's more common to aircraft. All of the rigidity is in the outer shell. The result is a strong and quiet boat.

Comfort, Creativity

You have to look closely around the Atlantique 50, but you'll find numerous entry points for getting to the boat's systems. For example, a pair of freshwater tanks is under the berths in the starboard guest stateroom.

A bulkhead panel at eye level in the same stateroom comes off to reveal the entire backside of the lower helm station. All of the wiring and electronics are readily accessible without requiring you to be a contortionist. There are two chilled-water air-conditioning units, each of which is capable of cooling the entire cabin. Multiple bilge pumps, both manual and automatic, are on the list of redundant safety features. There's even a fuel dipstick in the engine compartment as a backup system for the gauges at the helm.

Creature comforts are plentiful aboard the Atlantique 50. The main saloon and cockpit area can be made into one living space, thanks to wide sliding doors. The bridge overhang extends aft to the lazarette to shade the cockpit. As a standard feature, Cranchi provides air-conditioning outlets for the cockpit so you can control the climate on deck no matter what the weather.

The saloon features a L-shaped sofa with a dining table to starboard and a full cabinetry with hidden up/down tv along the port side. In the forward part of

the saloon, the galley is to port and the lower helm station is to starboard. The galley has all the appliances you'll need to make everything from a simple snack to a sit-down dinner.

Storage and Stuff

There are three cabins on the lower deck of the Atlantique 50. The master is forward and has a pedestal berth at its center, along with a private head. A second head, which is identical in size and features, serves the other two cabins. The cabin on the starboard side has twin berths that convert to a king with a filler cushion. The port guest cabin has twin berths with a nightstand that extends between them halfway down from the headboard. All of the cabins features an audio system.

Storage is abundant and generous throughout the lower deck, from hanging lockers to drawers. There are even compartments in the companionway sole that serve a dual purpose. When you take out the storage bins, you gain access to mechanical systems. To secure your valuables, there's even a safe in the master suite, hidden away at the back of a closet.

Up and Out

Because of the cockpit overhang, the Atlantique 50's flybridge is exceptionally long and spacious. A large seating area aft can be converted into a sunpad. There's a two-person sofa at the port front corner that faces the doublewide helm seat. The flybridge seating has a feature not often found but should be on every boat. There are plenty of convenient grabrails for passengers to hold onto when the seas get bumpy. A Bimini top comforts you on hot days.

The Atlantique 50 has a lazarette compartment that can be used either for storage or configured as crew's quarters. As the latter, it's an air-conditioned space that includes a berth, sink and toilet. There's even a window that opens for ventilation. The passarelle on our Atlantique 50 can be used to handle a tender or personal watercraft stowed on the swim platform. It's operated by a hand-held wireless remote control. A point worth mentioning here is that all of the deck railings are made in sections so they easily can be replaced if damaged. The bow pulpit is one piece and can be taken off without having to disassemble any of the side railings.

Stable, Smooth

This Cranchi 50 is equipped with the much stronger new Volvo Penta D9-575 diesels. The pair is rated at a total 1,150 hp, which gives the boat power to spare. Acceleration from a standing start is smooth and strong, as it is from mid-range speeds. The boat further turns like a speed-boat.

Overall, the Atlantique 50 is a smooth and sensible ride in an attractive package.

Engines, gen-set, gearbox, hydraulics and controls:

- Twin Volvo D9-575
- 436 hours
- 2 x 4 Blade Aquafoil nickel-alu-bronze propellers
- ZF extra duty gearboxes
- Bow thruster
- 1 x Fischer Panda 7kw generator with muffler
- 1 x Double electronic MicroCommander
- Pressurised hydraulic steering
- Besenzoni hydraulic gangway
- Bennet hydraulic trim-tabs
- Raymarine electro hydraulic steering pump

Specifications:

- Length CE: 14.99 LOA: 15.54m
- Length waterline: 12.18m
- Beam: 4.33m
- Draft keel: 0.95m
- Draft props: 1.30m
- Normal air draft: 4.18m
- Lowest air draft: 3.23m
- Transport height: 4.15m
- Displacement: 15.600 kgs
- Fully loaded: 17.990 kgs
- Fuel: 1520 Litres
- Water: 560 Litres + 40Litres boiler
- Black: 100 Litres
- Cruising: 25 knots
- Maximum: 33.7 knots (SOG)

Lay-out:

- Cabins: 3+1 crew
- Berth: 6+1 crew
- Bathrooms: 2
- Toilet: 3
- Master stateroom over her full beam in bow
- Master bathroom with separate shower ensuite
- Guestroom double on port
- Guestroom twin on starboard
- Guestroom bathroom ensuite
- Large salon
- Large galley with all facilities

Interior Finish

- Furniture in cherry
- Glossy laquer
- Galley and toilet work tops made of Corian®
- Fabrics: cotton, leather, Alcantara®
- Internal compartment dividing walls made specifically for noise absorption, insulation and lightness
- Self-draining cockpit
- Foldaway service sink
- Rolling rubber hose
- Small rubber hose to wash engine room
- Side accomodation for water proof jackets
- Buckskin, sponge and bucket
- Fire extinguisher
- N. 4 mooring lines
- Divan with locker
- Locking power-assisted hatch for access to engine room
- Teak table with 2 chairs
- Step for access to side deck teak laid
- Cockpit and swimming platform floors teak-laid
- Foldaway swimming ladder with folding retrieval handle
- Storage locker on swimming platform with teak-laid hatch
- Shower with mixer
- 230 V shore power socket with shore power cable
- Pressure reducer
- Lighting
- N. 2 batteries of 160 amp. 24 v. for the engine
- N. 2 batteries of 200 amp. 24 v. for services
- Power utilities provided with magnetothermal protectors
- 32 Amp./h socket for shore power
- 7,7 kva generator with own battery charger and own battery switch and muffler
- 35 Amp./h automatic battery charger
- 230 v. power sockets
- Protector with differential fuse and individual surge protectors on all utilities
- Galvanic isolator
- Electrical panel switch for shore power/on-board generator
- Complete cathode electrolysis protection for engines, fuel tanks, sea-intakes, rudders etc.
- 63 amp/h windlass magnetothermal protector
- Automatic battery switches with electrically controlled cut-in /out
- Corian® worktop
- Stove-top with 2 electric hotplates
- S. steel sink with mixer
- Microwave and grill oven
- Lt. 190 refrigerator with power switch for 24/230 V
- Waste bin
- Cutlery drawers
- Cupboards and cabinets for stowing crockery
- 230 V power socket
- Water level gauge

Bilge Pumps

1 automatic electric pump 120 lt./min. with manual switch

for cabin compartment

- 1 automatic electric pump 120 lt./min. with manual switch for engine compartment
- 1 automatic electric pump 120 lt./min. with manual control for stern storage compartment
- 1 hand pump for engine room
- 1 hand pump for the cabin compartment
- Bilge micro suction system in engine compartment.

Fire Extinguishers

- N. 2 automatic fire extinguishers in engine compartment
- N. 1 manual fire extinguisher in the cabin
- N. 1 manual fire extinguisher in the cockpit
- Removable bow extension
- Bow storage locker for mooring lines
- Anchor winch remote control
- 1200 W electric winch with control (flybridge) with winch for retrieving lines (warping bell)
- Chaincounter on flybridge helm position
- Water connection for chain washing
- 20 kg. Bruce anchor 50m/10mm chain
- Shower on bow
- Bow sun pads
- 5 kW bow thruster
- Hydraulic passerelle with remote control
- 2 bow, 4 spring, 4 stern AISI 316 s. steel cleats
- S. steel pulpit with front opening, and s. steel filiere
- Bow fender holder for n. 6 felders
- S. steel deck handles and guardrails
- S. steel rubbing band
- Directional searchlight
- Horn
- Dual s. steel fuel filler caps
- Dual fuel tank air vent with anti-flame /anti-spray net
- S. steel water filler cap
- Dual water tank air vent
- S. steel port and starboard discharge suppers
- Navigation lights
- Bow and stern U hooks
- Hydraulic trim tabs
- Moulded non-slip deck
- Owners manual
- 1200W electric winch
- Bow thruster 5 Kw
- 7,7 Kva generator
- Ice-maker
- BBQ cooking grate
- Hydraulic passerelle with teak floor and remote control
- 2 refrigerators (cabin/flybridge)
- GPS + chartplotter (colour)
- Autopilot
- VHF DSC (double station)
- Anchor winch remote control
- Tridata echo/speed log/temp. dual station
- Rudder angle indicator
- Trim tabs indicator
- Search light
- Flybridge bimini top
- Chain meters counter (fly bridge)
- Buckskin/sponge/bucket
- Flybridge sun cushion and bow one
- Covers for dashboard, pilot seat and divans
- Cockpit and swimming platform teak-laid floors
- Vacuum flush WC

- N. 4 mooring lines
- 1 CD/radio in saloon with 6 CD radios in cabins
- TV antenna and wiring
- Galley teak and saloon floor teak laid
- Cranchi® set of crockery, cuttlery and glasses (6 pp.)
- Saucepan set
- First aid kit
- Safe in master cabin
- N. 1 manual fire extinguisher in the cabin and n. 1 manual fire extinguisher in the cockpit
- N. 2 automatic fire extinguishers in the engine room

Disclaimer

GrandYachts offers the details of this vessel in good faith but cannot guarantee or warrant the accuracy of this information nor warrant the condition of the vessel. A buyer should instruct his agents, or his surveyors, to investigate such details as the buyer desires validated. This vessel is offered subject to prior sale, price change, or withdrawal without notice.

General information

Make:	Cranchi
Model:	Atlantique 50
Year:	2008
Condition:	Used
Hull:	Fiberglass

Engine

Engine:	Volvo Penta D9-575 EVC 2008
Engine type:	Inboard engine
Fuel type:	Diesel
Fuel tank:	1521.74 l (402.00 gal)

Measurements

Length:	15.54 m (50.98 ft)
Beam:	4.33 m (14.21 ft)
Deep:	0 m (0.00 ft)

Accommodation

Cabins:	0
Berths:	4
Watertank:	560.24 l (148.00 gal)
Holdingtank:	100 l (26.42 gal)

Images



Cranchi Atlantique 50



Cranchi Atlantique 50



Cranchi Atlantique 50



Cranchi Atlantique 50



Cranchi Atlantique 50



Cranchi Atlantique 50



Cranchi Atlantique 50



Cranchi Atlantique 50



Cranchi Atlantique 50



Cranchi Atlantique 50



Cranchi Atlantique 50



Cranchi Atlantique 50



Cranchi Atlantique 50



Cranchi Atlantique 50



Cranchi Atlantique 50



Cranchi Atlantique 50



Cranchi Atlantique 50



Cranchi Atlantique 50



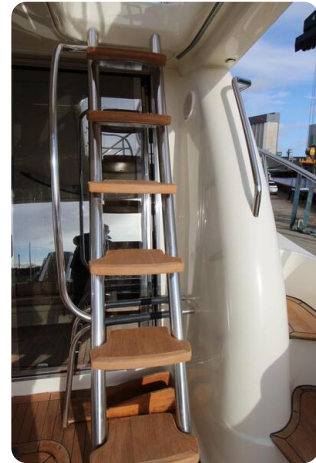
Cranchi Atlantique 50



Cranchi Atlantique 50



Cranchi Atlantique 50



Cranchi Atlantique 50



Cranchi Atlantique 50



Cranchi Atlantique 50



Cranchi Atlantique 50



Cranchi Atlantique 50



Cranchi Atlantique 50



Cranchi Atlantique 50



Cranchi Atlantique 50



Cranchi Atlantique 50



Cranchi Atlantique 50



Cranchi Atlantique 50



Cranchi Atlantique 50



Cranchi Atlantique 50



Cranchi Atlantique 50



Cranchi Atlantique 50



Cranchi Atlantique 50



Cranchi Atlantique 50



Cranchi Atlantique 50



Cranchi Atlantique 50



Cranchi Atlantique 50



Cranchi Atlantique 50



Cranchi Atlantique 50



Cranchi Atlantique 50



Cranchi Atlantique 50



Cranchi Atlantique 50



Cranchi Atlantique 50



Cranchi Atlantique 50



Cranchi Atlantique 50



Cranchi Atlantique 50



Cranchi Atlantique 50



Cranchi Atlantique 50



Cranchi Atlantique 50



Cranchi Atlantique 50



Cranchi Atlantique 50



Cranchi Atlantique 50



Cranchi Atlantique 50



Cranchi Atlantique 50



Cranchi Atlantique 50



Cranchi Atlantique 50



Cranchi Atlantique 50



Cranchi Atlantique 50



Cranchi Atlantique 50



Cranchi Atlantique 50



Cranchi Atlantique 50



Cranchi Atlantique 50



Cranchi Atlantique 50



Cranchi Atlantique 50



Cranchi Atlantique 50



Cranchi Atlantique 50



Cranchi Atlantique 50



Cranchi Atlantique 50



Cranchi Atlantique 50



Cranchi Atlantique 50



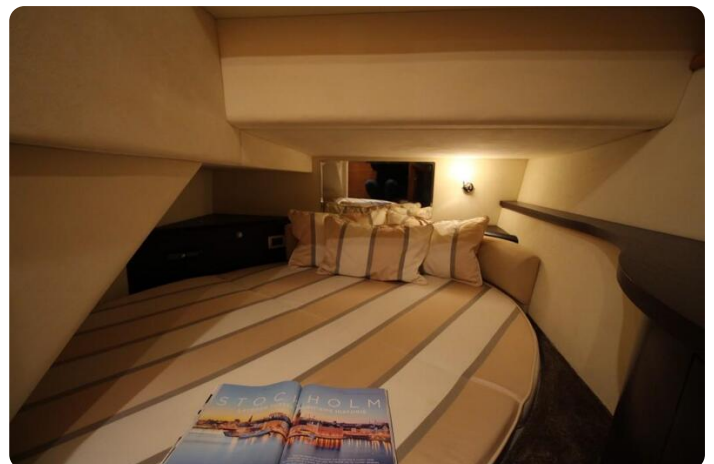
Cranchi Atlantique 50



Cranchi Atlantique 50



Cranchi Atlantique 50



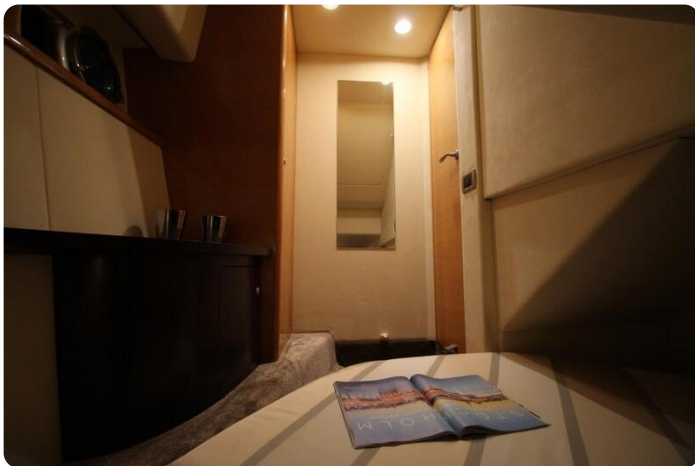
Cranchi Atlantique 50



Cranchi Atlantique 50



Cranchi Atlantique 50



Cranchi Atlantique 50



Cranchi Atlantique 50



Cranchi Atlantique 50



Cranchi Atlantique 50



Cranchi Atlantique 50



Cranchi Atlantique 50



Cranchi Atlantique 50



Cranchi Atlantique 50



Cranchi Atlantique 50



Cranchi Atlantique 50



Cranchi Atlantique 50



Cranchi Atlantique 50



Cranchi Atlantique 50



Cranchi Atlantique 50



Cranchi Atlantique 50



Cranchi Atlantique 50



Cranchi Atlantique 50



Cranchi Atlantique 50



Cranchi Atlantique 50



Cranchi Atlantique 50



Cranchi Atlantique 50



Cranchi Atlantique 50



Cranchi Atlantique 50



Cranchi Atlantique 50



Cranchi Atlantique 50



Cranchi Atlantique 50



Cranchi Atlantique 50



Cranchi Atlantique 50



Cranchi Atlantique 50

GrandYachts BV

Geijsterseweg 10
5861 BL Wanssum
Netherlands

Phone: 0031(0)478450015

<https://grandyachts.eu>



GRANDYACHTS[®]