

Birchwood TS 44

£79,995 • Essex United Kingdom (UK) • Used • 1989

Presented by

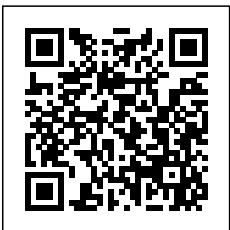
Peter Marchant
Phone: 44(0)1206302003

Morgan Marine
The Boatyard, Shipyard
Estate
CO7 0AR Colchester
United Kingdom (UK)



Details

Make:	Birchwood
Model:	TS 44
Year:	1989
Condition:	Used
Engine type:	
Fuel type:	Diesel
Length:	13.41 m (44.00 ft)
Beam:	4.57 m (14.99 ft)
Cabins:	0
Berths:	0



Morgan Marine



7zea.com

Description

EN

Wonderful opportunity to acquire a well presented Birchwood TS44 from the once renowned British yard Birchwood Boats. This fantastic and exceptionally spacious motor yacht underwent a comprehensive refit between 2012 and 2014 at a cost of approximately £80,000. The extensive programme of works included a full engine overhaul, new Eberspacher forced hot air heating system with updated controls and new oil lines, replacement of all windows with new units, refurbishment and renewal of the teak decking, and a complete galley refit, among many other improvements. The level of investment is evident throughout, giving the boat a fresh, well-maintained feel while preserving her classic character. Mechanically, she is powered by twin Caterpillar 3208 TA V8 375HP diesel inboard engines with approximately 1,500 running hours, delivering dependable performance synonymous with this proven powerplant. A generator is also fitted, along with an inverter system featuring automatic switching for seamless onboard power management. An immersion heater provides hot water, ensuring comfort whether underway or in the marina. Navigation and onboard systems are well specified, including an electric anchor windlass, Raymarine chart plotter with GPS and echo sounder, and a fixed VHF radio. Onboard space is where the TS44 truly excels. Her layout and volume are comparable to significantly larger yachts, such as the Princess 55, offering an impressive sense of openness and comfort throughout. With three separate cabins and two heads, she provides generous accommodation for family and guests alike, making extended cruising both practical and enjoyable. Retaining plenty of character from her era, the interior woodwork has stood the test of time remarkably well, showcasing the quality craftsmanship for which these boats are known. Early viewing is highly recommended to fully appreciate the space, condition and value on offer.

Deck: Electric anchor windlass with anchor and rope + stainless steel bow stem plate. 2 x Forward, 2 x midships, 2 x stern mooring cleats. Stainless steel handrails with opening pulpit; Self-draining cockpit with full canvas enclosure and opening/ladder down to bathing platform. Mooring lines and fenders. Stainless steel davits x 2. Teak cockpit flooring with L shape seating to port and starboard. Large flybridge with teak flooring and seating/sun loungers, second helm station with cover. Radar arch with ambience lighting. New canopies for both rear deck and flybridge 2021. Fender baskets.

Cabin: Master cabin forward with opening roof hatch and en-suite. New shower in en-suite. Port side cabin with double berth and en-suite. Starboard twin berth cabin with corridor access to second heads compartment. Stairs up to wheelhouse/saloon. Galley with worktops and sink/taps, Panasonic combination oven / grill / microwave, 24-volt fridge. Interior includes replacement bedding, carpets, upholstery, washing machine and separate tumble dryer. Internal mirrors throughout. All windows replaced with new units made to measure by Seaglaze of Norwich.

Cockpit: Port side helmsman area with navigation instruments. Large cockpit saloon with leatherette semi-circle seating/dining area to starboard and leatherette 'L' shape sofa to port. Rear sliding doors to cockpit with engine room access through cockpit floor into lazarette and then forward to engine room. Transom door leading to bathing platform. Ships wheel with hydraulic steering.

Electronics: Raymarine chart plotter, GPS and echosounder. Fixed VHF radio. All main instruments including for each engine tachometer, voltmeter, oil pressure, engine temperature, and alarm panel. Compass. Twin lever morse controls. Horn. Electric windscreen wiper motors and wiper arms. Navigation lights. Intelligent 24-volt Mastervolt battery charger with three 40 amp charging circuits, and touch screen

control, all batteries and both alternators replaced in 2016. Freshwater pump replaced in 2018. Upgraded 24-volt internal circuitry, hot water heating element replaced in 2019. Sound system with internal and external (waterproof) speakers. Inverter system with automatic switching. Immersion heater. 240v shoreline. Pressured freshwater system. Deck searchlight.

Machinery: Twin Caterpillar 3208 TA V8 375 HP diesel internal combustion engines, with circa 1500 running hours. Shaft drives through P Brackets and cutlass bearings (replaced 2013) to 3 blade propellers. Twin bronze propellers. Hydraulic Steering. Generator. Both engines and generator fully serviced in 2022. Eberspacher forced hot air heating and controls with new oil lines fitted. 8 x 12v batteries serving a 24v system. Automatic battery management charging system (new 2022). 2 x 200 gallon (909 L) diesel tanks and 2 x 75 gallon (341L) fresh water tanks. Electric trim tabs. Calorifier with immersion heater.

General information

Make:	Birchwood
Model:	TS 44
Year:	1989
Condition:	Used

Engine

Engine type:	
Fuel type:	Diesel

Measurements

Length:	13.41 m (44.00 ft)
Beam:	4.57 m (14.99 ft)
Deep:	1.07 m (3.51 ft)
Weight:	0 ()

Accommodation

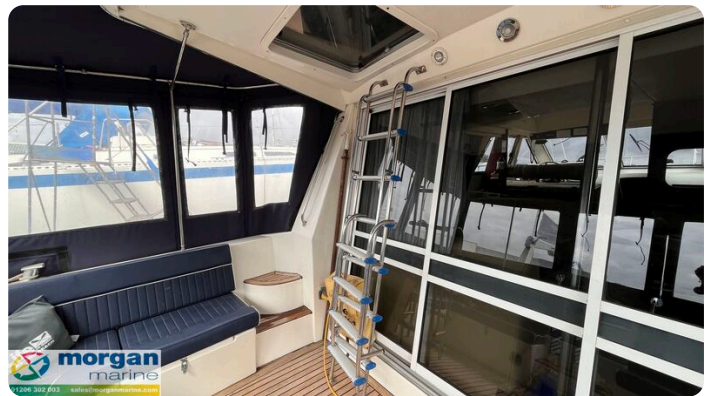
Cabins: 0

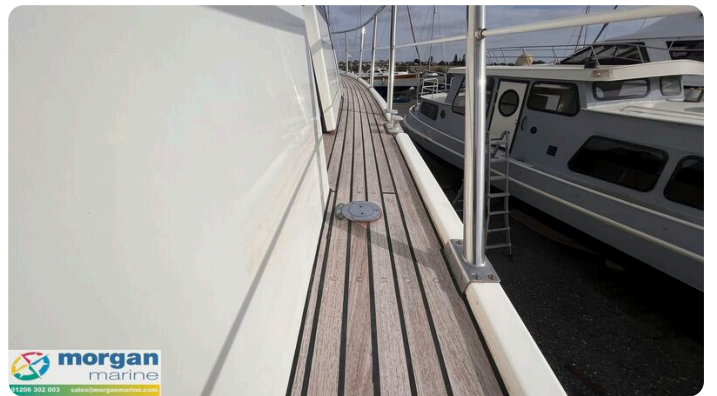
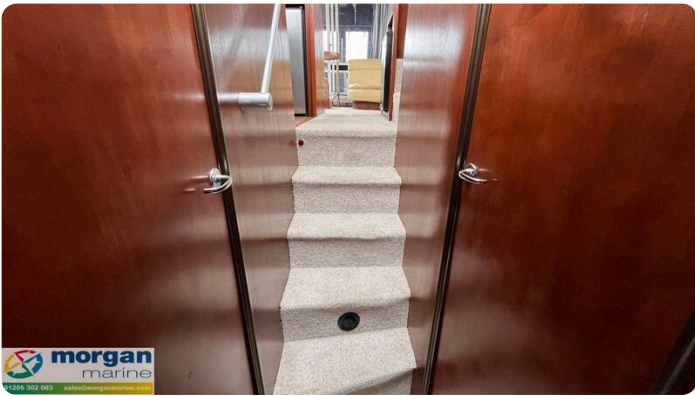
Berths: 0

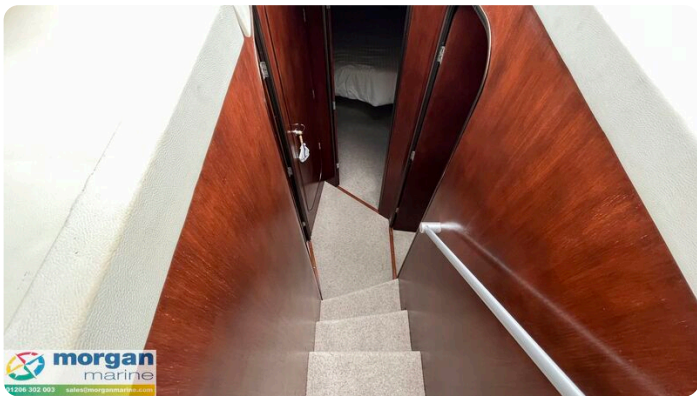
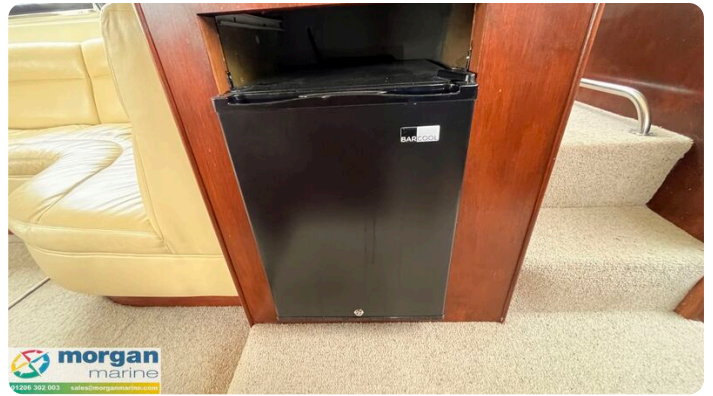
Images

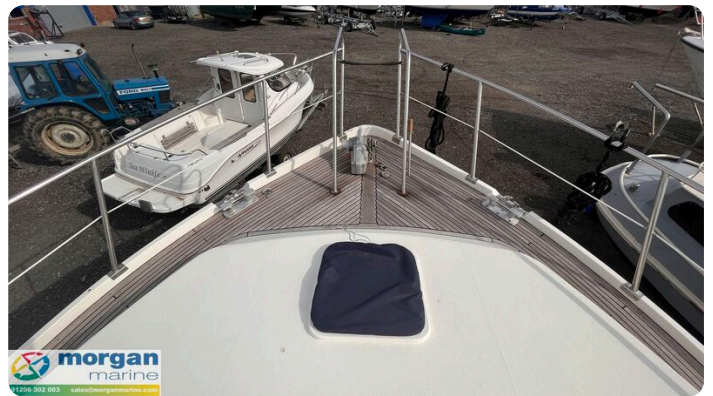
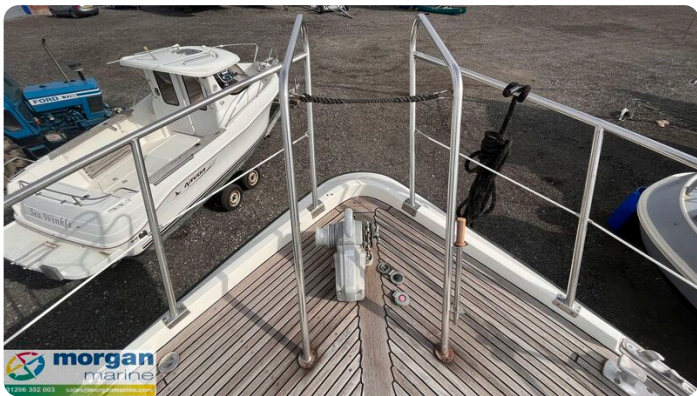
















Morgan Marine

The Boatyard, Shipyard Estate
CO7 0AR Colchester
United Kingdom (UK)

Phone: 44(0)1206302003

<https://morganmarine.com>

