



Barbery Class cruising ketch yacht

£21,995 • Essex Royaume-Uni • Usagé • 1972

Présenté par

Peter Marchant
Phone: 44(0)1206302003

Morgan Marine
The Boatyard, Shipyard
Estate
CO7 0AR Colchester
Royaume-Uni



Détails

Fabricant:	Barbery
Modèle:	Class cruising ketch yacht
An:	1972
Condition:	Usagé
Type de moteur:	
Type de carburant:	Diesel
Longueur:	9.91 m (32.51 ft)
Largeur:	3.15 m (10.33 ft)
Cabines:	0
Couchettes:	0



Morgan Marine



7zea.com

La description

EN

Barbary class cruising ketch yacht just in at Morgan Marine. The Barbary Class Ketch are well respected and proven cruising boats. Traditional in design and built strongly, and are capable of impressive sailing performance and guaranteed seakeeping abilities. Barbary Rose represents excellent potential for coastal hopping, offshore cruising and even as a small liveaboard - This boat is a good example of the range, and has been consistently and carefully maintained, inside and out.

Deck: Mast head bermudian ketch rig, the main mast with single inline spreaders and the mizzen mast with single inline spreaders and jumper strut. Main sail - by Arun sails. Mizzen - By James Lawrence sails. Furling genoa in white polestar. Self draining cockpit. Pulpit. Stern guard. Stanchions. Handrails. Fenders and ropes. Mooring cleats. Electric windlass with anchor and chain. Hatches.

Cabin: 6 Berths. Double berth by conversion of dinette arrangement. Single V berths on either side of the fore cabin. Single berths on either side of the aft cabin. Galley with sink, fridge and cooker. Head compartment with marine toilet and sink. Cabin lights. Interior curtains.

Cockpit: Self draining cockpit with rigid wheel shelter with GRP top and alloy frame with toughed glass windows. Aft canopy. Cockpit bench with cushions and lockers. Starboard side steering console. Engine compartment.

Electronics: Raymarine C80 GPS/ Plotter/Radar. Raymarine ST6001 autopilot. Raymarine VHF radio. Raymarine depth sounder, Speed / distance log, Wind speed / direction indicator. Plastimo compass. Sestrel barometer and world clock. Solar panels. Nav lights. Bilge pump. Screen wipers. Horn.

Machinery: 1972 Mercedes Benz OM 636 42hp inboard diesel with shaft drive - Gearbox reconditioned in 2006. Airtone D4 diesel fired cabin heater.

Informations générales

Fabricant:	Barbary
Modèle:	Class cruising ketch yacht
An:	1972
Condition:	Usagé

Moteur

Type de moteur:	
Type de carburant:	Diesel

Des mesures

Longueur:	9.91 m (32.51 ft)
Largeur:	3.15 m (10.33 ft)
Profond:	1.45 m (4.76 ft)
Poids:	0 ()

Hébergement

Cabines:	0
Couchettes:	0

Images

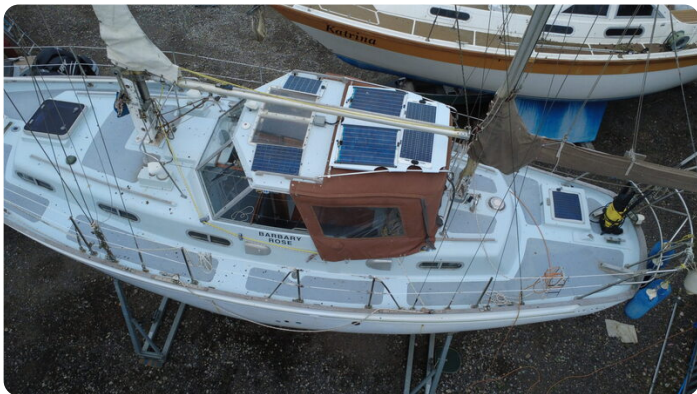
















Morgan Marine

The Boatyard, Shipyard Estate
CO7 0AR Colchester
Royaume-Uni

Téléphone: 44(0)1206302003

<https://morganmarine.com>

