



Axopar 37 Sun Top

US\$219,000 • Palm Beach United States of America (USA) • Used • 2019

Presented by

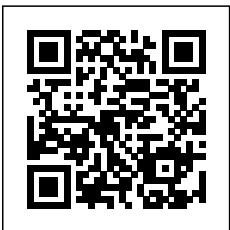
Max Krauss
Phone: 1-561-612-7076

Nautical Ventures
50 SOUTH BRYAN RD.
FL 33004 DANIA BEACH
United States of America
(USA)

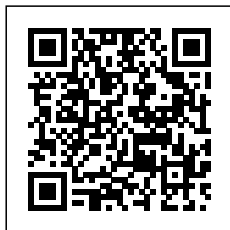


Details

Make:	Axopar
Model:	37 Sun Top
Year:	2019
Condition:	Used
Engine type:	
Length:	37 ft (11.28 m)
Beam:	10 ft (3.05 m)



Nautical
Ventures



7zea.com

Description

Available in Store: Palm Beach - HIN: AXOB7231G919

2019 Axopar 37 Sun Top

Twin Mercury 350hp

Trailer Not Included

This 2019 Axopar 37 Sun Top is fully loaded and powered by twin Mercury 350 HP Cold Fusion engines, including a 7" Vesselview.

This vessel features the Brabus line trim package with Miami Blue hull color and the retractable Sunbrella canvas T-Top. Electronics include Garmin GPSMap 1222 Touch, Sonar Module Garmin with DownVu/SideVu, the Garmin VHF300i, and the upgraded Fusion Audio unit. Other notable features include 120V shore power, and bow thrusters.

Exterior features include the bow lounge, a wet bar, a targa arch, a waterski pole, two cockpit refrigerators, underwater lights, starboard aft livewell, side rails, cockpit speakers, a windscreen, windscreen wipers, a cockpit shower, a swim platform, swim ladder, port aft fender storage, an anchor and anchor locker, a cockpit table, and a gray rub rail.

Seating includes a bow sun pad with additional bow cushions and a bow table, three seats at the helm with swivel function, four seats aft of the helm, and three transom seats, all in Silvertex Sterling. The helm seats swivel to face aft, creating a dinette area. The cockpit table can then lower to accommodate a filler cushion and create a berth for two, or fold to be out of the way. The bow lounge features a removable table for another dining and entertaining area.

The forward cabin entryway is located at the helm. The cabin features a V-berth to accommodate two, a berth curtain, a bench seat, a sink with a cabinet, storage cabinets, courtesy lights, wood floor, blinds, and a toilet that is hidden by a folding cushion to create a bench seat.

Canvas includes foredeck covers, a wet bar cover, transom seat covers, and a forward sun shade with stainless steel poles,

Engine 1

- Mercury
- 350
- 2019
- Outboard
- 350.00 HP
- 261.00 KW
- Gas/Petrol
- 552.00 Hours

Engine 2

- Mercury
- 350
- 2019
- Outboard
- 350.00 HP
- 261.00 KW
- Gas/Petrol
- 552.00 Hours

Standard Equipment

HULL AND DECK:

- Hand laminated hull in Vinylester resin for the first coat

- of the hull in GRP material
- Non-skid finishing on deck and hatches
- Spacious anchor box with drainage in bow
- Large stowage locker on foredeck
- Heavy duty rub rail in grey
- Windscreen and side windows in toughened glass with light green tint and aluminium window profiles painted in white
- All hardware, pulpit and cockpit handles in hand polished 316 stainless steel, 8 x cleats aft, central and forward
- Self-draining deck with large diameter scuppers
- Flag pole
- Twin large fender storage on aft deck with cooler box function on Port side
- Integrated bathing platforms in Esthec Platinum with white caulking and telescopic bathing ladder
- Integrated engine bracket for outboard engines

LAY-OUT AND SEATING:

- Walk-around deck and open aft deck area with storage under deck
- Large seating area with four separate seats and fixed table in aft cockpit with cargo compartment under deck
- Three front seats with flip-up front and armrests with swivel function
- Center helm driving position with lowered floor level
- Sun-Top roof and arches in with large sliding canvas mid section
- Fore deck seating
- Harbor cover for helm and front seats
- Separate cover for aft seats

FRONT CABIN:

- Front cabin with lounge seating
- Large queen size bed and fixed cupboard
- Toilet with electric flush with septic tank 70l and deck/hull outlets
- Privacy curtains for toilet compartment
- Loading hatch from deck to front cabin
- Large roof skylight and front window
- Wide port lights with flush hatches

HELM CONSOLE:

- Integrated iPad slot in dashboard
- Soft touch painted dashboard
- Helm and console panels
- Illuminated push buttons
- Leather steering wheel with Axopar logo
- Two cup holders
- Co-pilot grab rail
- 12V power outlet
- Compass
- Access hatch to front cabin in soft touch black paint with metallic silver painted sliding door.

ELECTRICS:

- LED Sun-Top roof lights and spot lights in front cabin
- Main control panel with three battery switches and automatic fuses for direct supply and 12V outlet
- Fuse panel with automatic fuses and 12V outlet in front cabin
- Light mast with anchor light
- Navigation lights
- Heavy duty windscreen wiper
- Two electric bilge pumps
- Signal horn

OTHER:

- Fixed aluminium fuel tank - 192 gallon
- Bow thruster
- 2 kg Fire extinguisher
- Manual bilge pump
- Harbor cover for helm and front seats
- Separate cover for aft seats

Optional Features

- Wet bar package with refrigerator, sink and faucet, cabinet, drawers, and cover
- Second drawer type refrigerator in cockpit, Dometic CD21
- Premium Package, Silververtex Sterling
- Audio upgrade with one subwoofer on aft deck and 5ch amplifier and Fusion audio controls at helm and in cabin
- Front deck teak table
- Live well aft
- LED courtesy lights in front and main cabins
- Wood floor in front cabin
- Fishing targa arch with two extra rod holders
- Water ski pole
- Transom seats
- Twin Mercury 350 Hp rig, twin engine, incl. Vesselview 7"
- Bowthruster Side-Power SE60
- Anchor winch
- Side rails
- Shower on Aft Deck
- Underwater lights
- Sonar module Garmin GSD™ 25+ GT40-TM, DownVü/SideVü + Traditional
- Communication Garmin VHF300i
- Twin Chartplotter Garmin GPSMap 1222 Touch
- Harbor cover for fore deck, RED
- Sun shade on aft deck, for stationary use
- Bogantec - LightDeck flooring

Mechanical Disclaimer

Engine and generator hours are as of the date of the original listing and are a representation of what the listing broker is told by the owner and/or actual reading of the engine hour meters. The broker cannot guarantee the true hours. It is the responsibility of the purchaser and/or his agent to verify engine hours, warranties implied or otherwise and major overhauls as well as all other representations noted on the listing brochure.

Listing MLS by [Yachtr.com](https://www.yachtr.com)

General information

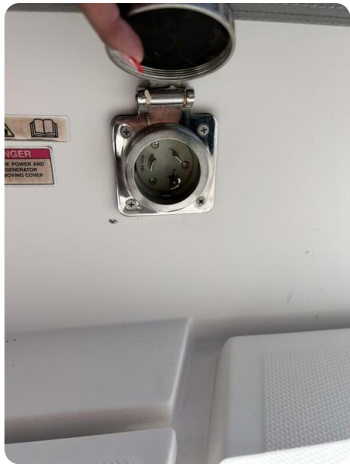
Make:	Axopar
Model:	37 Sun Top
Year:	2019
Condition:	Used
Engine type:	

Measurements

Length:	37 ft (11.28 m)
Beam:	10 ft (3.05 m)







Nautical Ventures
50 SOUTH BRYAN RD.
FL 33004 DANIA BEACH
United States of America (USA)
Phone: 1-561-612-7076
<https://www.nauticalventures.com>

