



# Arvor 25

£28,995 • Brightlingsea United Kingdom (UK) • Used • 2002

## Presented by

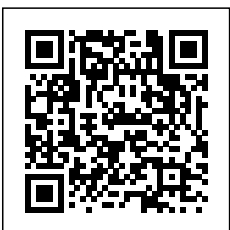
Peter Marchant  
Phone: 44(0)1206302003

**Morgan Marine**  
The Boatyard, Shipyard  
Estate  
CO7 0AR Colchester  
United Kingdom (UK)

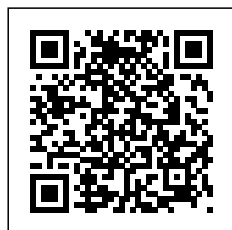


## Details

Make:	Arvor
Model:	25
Year:	2002
Condition:	Used
Engine:	, 300 hp
Engine type:	
Fuel type:	Diesel
Length:	7.47 m (24.51 ft)
Beam:	2.85 m (9.35 ft)
Cabins:	0
Berths:	0



Morgan Marine



7zea.com

## Description

EN

Now available at Morgan Marine - the 2002 Arvor 25 "Blue Dolphin," a versatile and rugged offshore fishing and cruising vessel. This classic wheelhouse boat offers generous cockpit space and comfortable accommodation for two in the forward cabin. Powered by a dependable Mercruiser 4.2L 220hp inboard turbo diesel engine with approximately 525 hours, she delivers smooth and efficient cruising, ideal for reaching offshore fishing spots with ease. "Blue Dolphin" has been well cared for and maintained by her owner and comes exceptionally well-equipped with a suite of electronics and extras. Onboard, you'll find a Garmin 2010C GPS chart plotter, Lowrance Hook 12 TS chart plotter with fish finder, JRC Radar 1000 MK II, Lowrance HDS5 chart plotter with fish finder, Cobra Marine VHF with GPS, and a Standard Horizon VHF radio. She also features an electric windlass, bow thruster, trim tabs, searchlight, and much more to enhance your time on the water. This is a solid and reliable vessel in good condition, offering excellent value and capability for both serious anglers and cruising enthusiasts. Early viewing is strongly recommended.

Cabin: Forward V-shaped cushioned seating which can sleep 2 with deck hatch. Port side worktop with storage and plumbed in water boiler. Starboard side toilet in separate compartment. Wooden floor trim. Storage.

Cockpit: Wheelhouse with aft door, large windscreen (3x windscreen wipers), roof hatch and wood trim floor. Large bench helm seat with dash with steering wheel and engine controls including Mercruiser gauges ( temperature, Oil level, hours, AMPS, and fuel) and compass.

Electronics: Garmin 2010C GPS map chart plotter. Lowrance Hook 12 TS chart plotter with fish finder. JRC radar 1000 MK II. Lowrance HDS5 chart plotter with fish finder. Cobra Marine VHF radio with GPS. Standard Horizon VHF radio. Trim tabs. 2x USB socket. Foredeck light. Bilge pump. Deck wash. Navigation lights. Isolator switch. Cabin lights. Anchor light. Electric windscreen wipers. 2x Search lights. Velez AM/FM radio stereo. Shore power.

Machinery: Mercruiser 4.2L 220hp turbo diesel inboard engine. Vetus bow thruster. Fuel capacity - 300 litres.

### General information

Make:	Arvor
Model:	25
Year:	2002
Condition:	Used

### Engine

Engine:	, 300 hp
Engine type:	
Fuel type:	Diesel

### Measurements

Length:	7.47 m (24.51 ft)
Beam:	2.85 m (9.35 ft)
Deep:	0.8 m (2.62 ft)
Weight:	0 ()

### Accommodation

Cabins:	0
Berths:	0





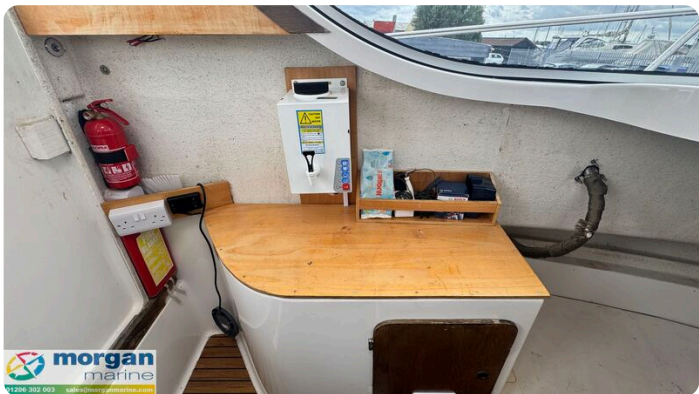
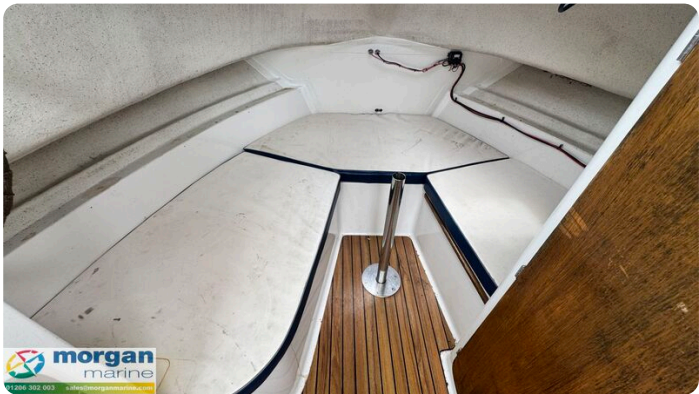
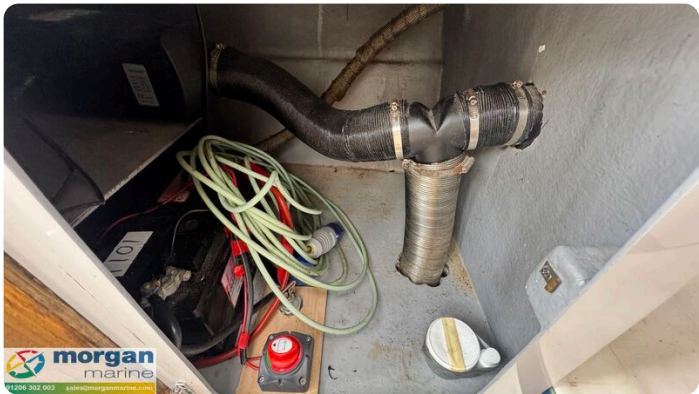








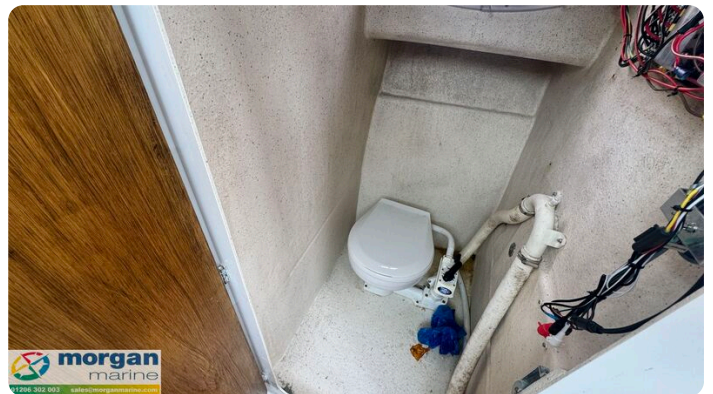


























**Morgan Marine**

The Boatyard, Shipyard Estate  
CO7 0AR Colchester  
United Kingdom (UK)

Phone: 44(0)1206302003

<https://morganmarine.com>

